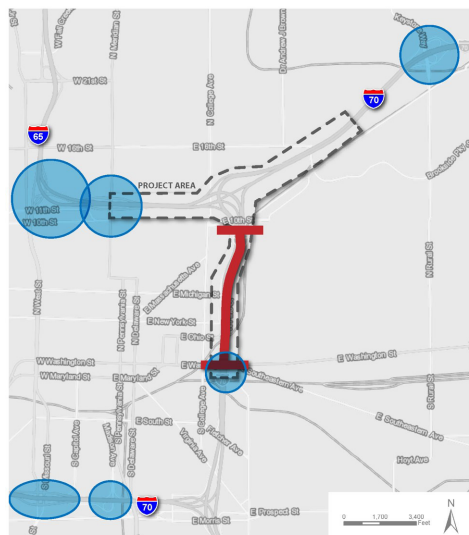
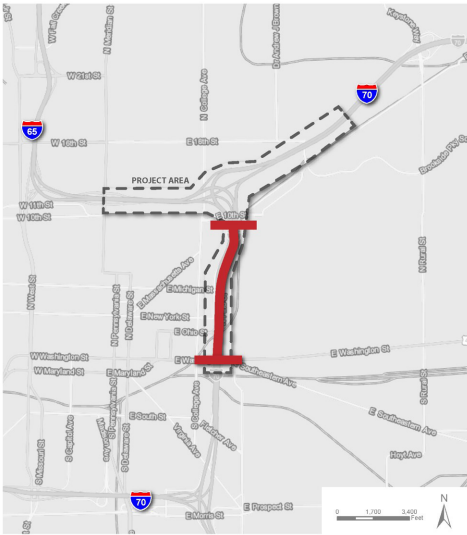


Criteria specified by INDOT for the design-build contractor's MOT plan are defined below:

I-65/I-70 through traffic closed between the North Split and Washington Street, up to two construction seasons. Through traffic is detoured to I-465.

All downtown exit and entrance ramps open at all times outside the North Split project area.

I-65 to I-70 link across the north part of the North Split open to traffic in each direction, except for a short closure (up to 45 days) of the eastbound movement for construction of one bridge.



Pine Street entrance ramp to eastbound I-70 open at all times. Westbound I-70 exit ramp at either Michigan Street or Ohio Street open at all times via the collector-distributor road.

All local roadways crossing the interstates will require closure at some point for bridge reconstruction, but in no case can adjacent roadways be closed at the same time.

