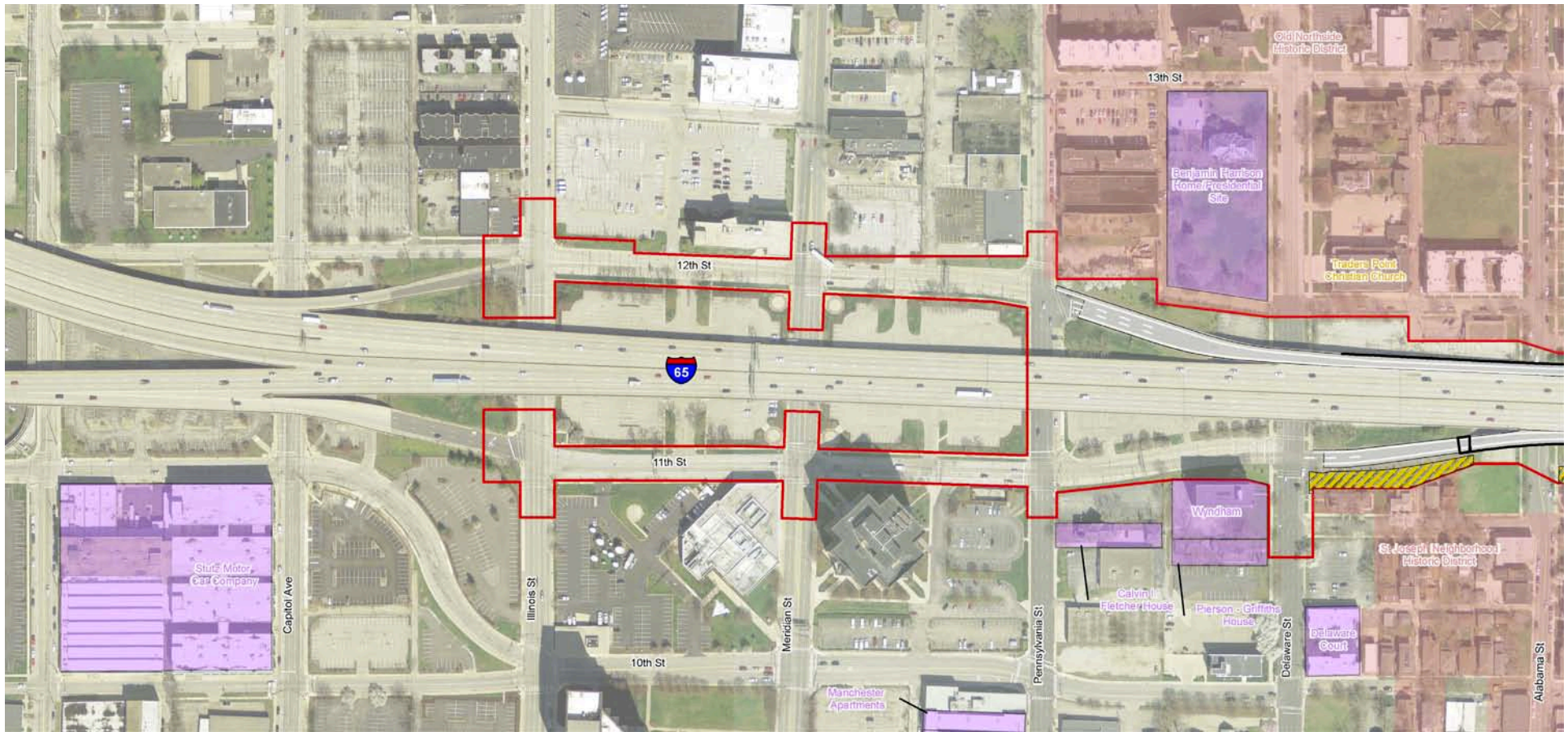


ENVIRONMENTAL RESOURCES SUMMARY

PRELIMINARY ENVIRONMENTAL RESOURCES MAP - 1



Legend

Page 1 of 12

- | | | |
|--------------------------|---------------------|--------------------------------|
| Project Limits | Do Not Disturb Area | Non-Regulated Wetland Features |
| Proposed Pavement | Parks | Regulated Wetland Features |
| Proposed Bridges | Trails | Pogues Run |
| Proposed Retaining Walls | Historic Districts | Stormwater Feature |
| Evaluated Noise Barriers | Historic Properties | |
| Removed Pavement | | |

Environmental Features Map

Note: Design information is preliminary and may change slightly during final design

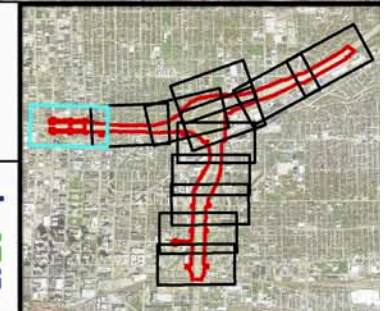
Des. Nos. 1592385 & 1600808

North Split Project

1 inch = 200 feet

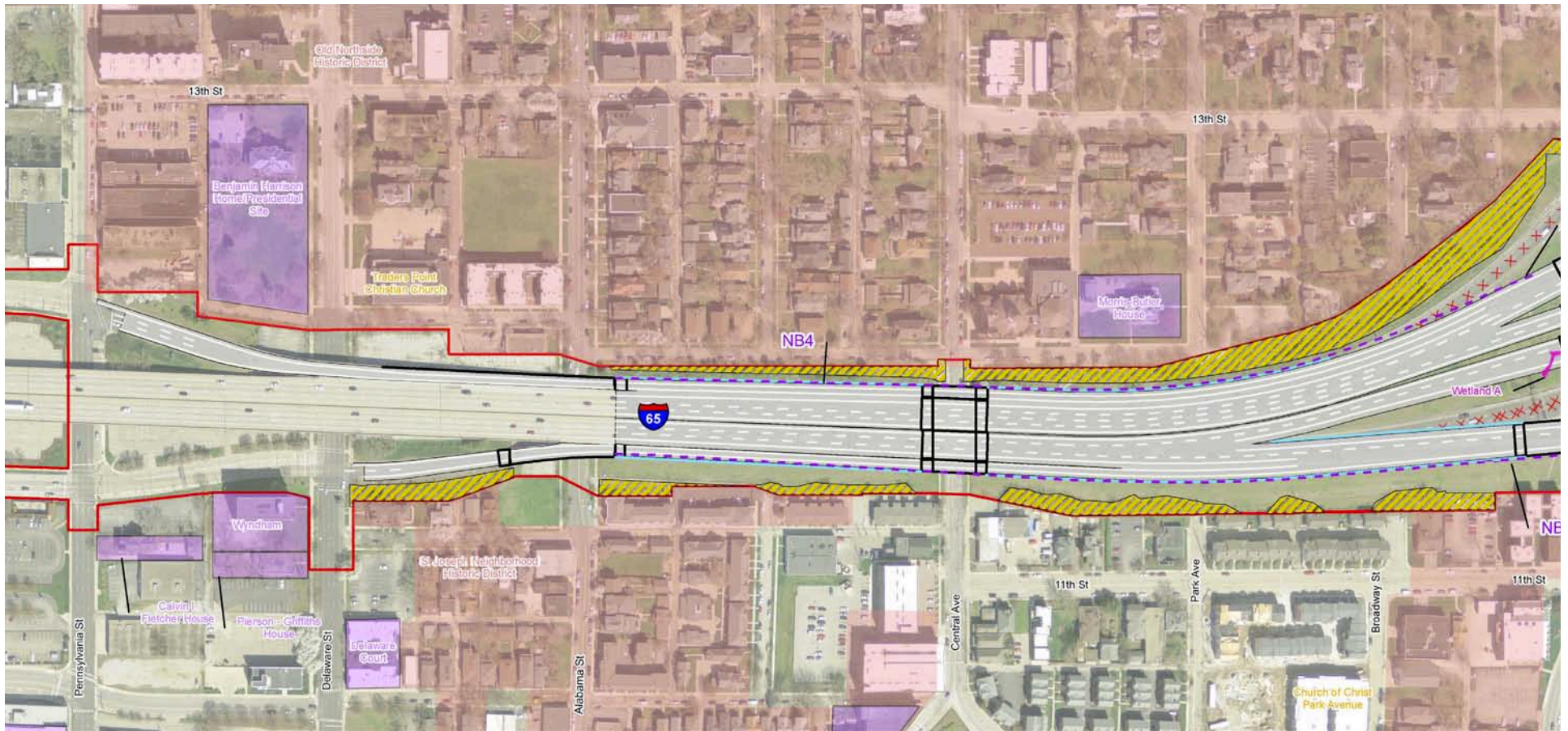


0 200 400 Feet



ENVIRONMENTAL RESOURCES SUMMARY

PRELIMINARY ENVIRONMENTAL RESOURCES MAP - 2



Legend

Page 2 of 12

- | | | |
|--------------------------|---------------------|--------------------------------|
| Project Limits | Do Not Disturb Area | Non-Regulated Wetland Features |
| Proposed Pavement | Parks | Regulated Wetland Features |
| Proposed Bridges | Trails | Pogues Run |
| Proposed Retaining Walls | Historic Districts | Stormwater Feature |
| Evaluated Noise Barriers | Historic Properties | |
| Removed Pavement | | |

Environmental Features Map

Note: Design information is preliminary and may change slightly during final design

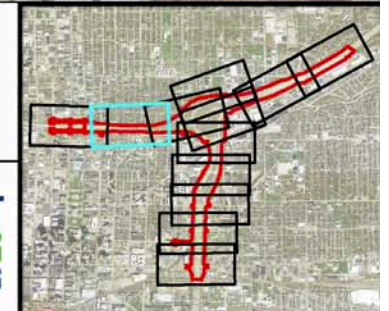
Des. Nos. 1592385 & 1600808

North Split Project

1 inch = 200 feet



0 200 400 Feet



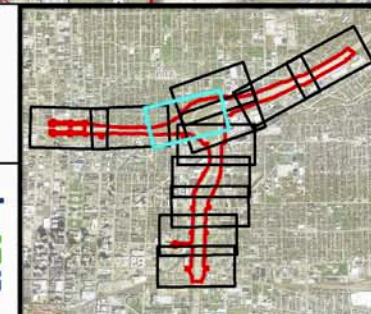


**NORTH SPLIT
UPGRADES
DRIVING PROGRESS**

	Project Limits		Do Not Disturb Area		Non-Regulated Wetland Features
	Proposed Pavement		Parks		Regulated Wetland Features
	Proposed Bridges		Trails		Pogues Run
	Proposed Retaining Walls		Historic Districts		Stormwater Feature
	Evaluated Noise Barriers		Historic Properties		
	Removed Pavement				

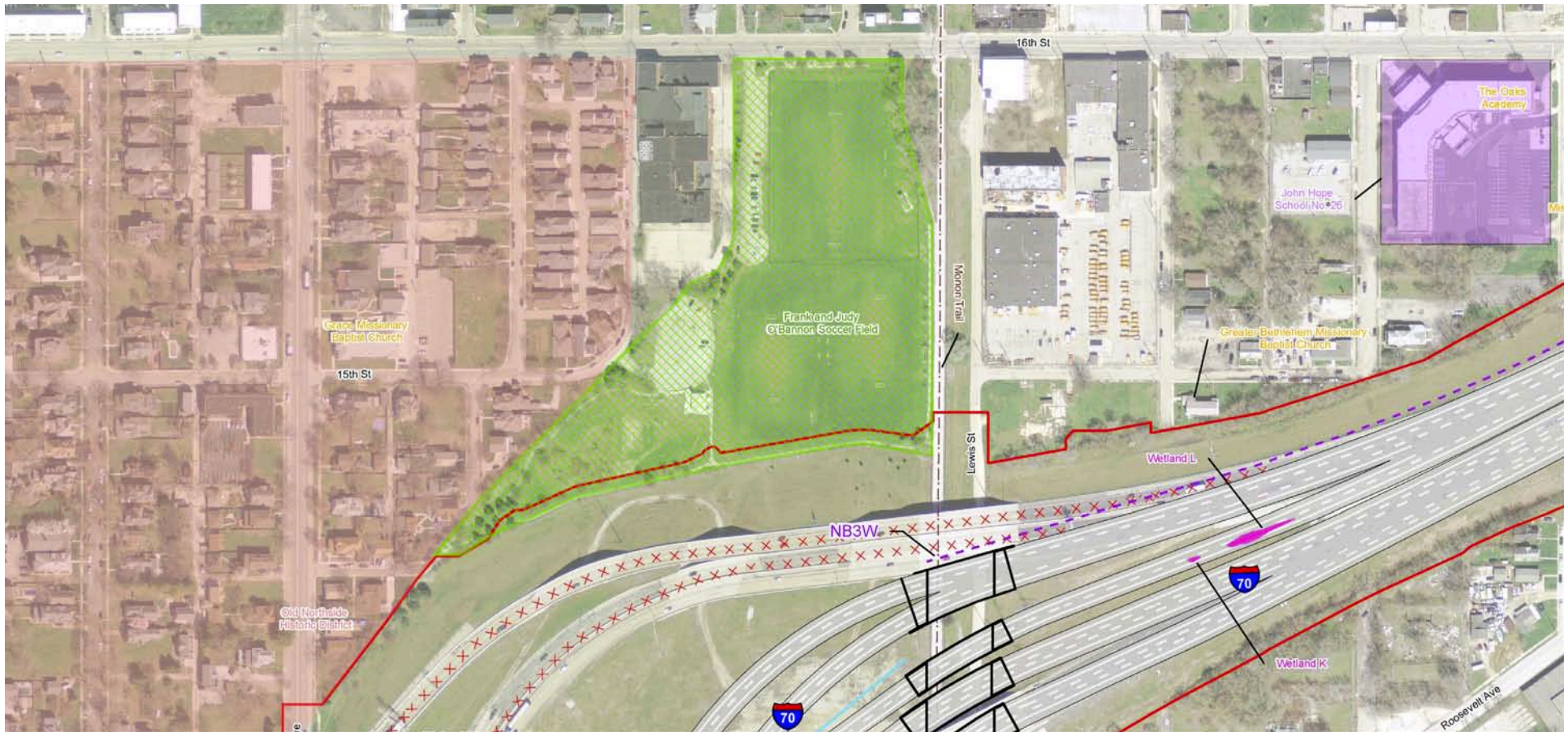
Note: Design information is preliminary and may change slightly during final design
Des. Nos. 1592385 & 1600808
North Split Project

A horizontal number line representing distance in feet. It has tick marks at 0, 200, and 400. The word "Feet" is written at the right end. A white rectangular segment is highlighted between the 100 and 200 marks.



ENVIRONMENTAL RESOURCES SUMMARY

PRELIMINARY ENVIRONMENTAL RESOURCES MAP - 4



Legend

Page 4 of 12

- | | | |
|--------------------------|---------------------|--------------------------------|
| Project Limits | Do Not Disturb Area | Non-Regulated Wetland Features |
| Proposed Pavement | Parks | Regulated Wetland Features |
| Proposed Bridges | Trails | Pogues Run |
| Proposed Retaining Walls | Historic Districts | Stormwater Feature |
| Evaluated Noise Barriers | Historic Properties | |
| Removed Pavement | | |

Environmental Features Map

Note: Design information is preliminary and may change slightly during final design

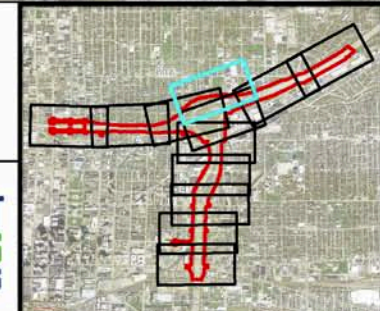
Des. Nos. 1592385 & 1600808

North Split Project

1 inch = 200 feet



0 200 400 Feet





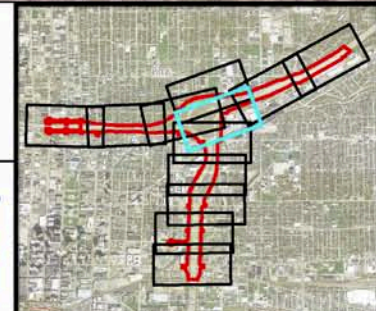
**NORTH SPLIT
UPGRADES
DRIVING PROGRESS**

This aerial map illustrates the proposed bridge structures for the I-65/I-70 interchange in Atlanta, Georgia. The map highlights several wetland areas, labeled Wetland A through Wetland J, which are situated along the proposed bridge alignments and adjacent to existing infrastructure. Key features include:

- Wetland Locations:** Wetland A, B, C, D, E, F, G, H, I, J, and K are marked with red 'X' symbols and labels. Wetland A is located near the intersection of I-65 and I-70. Wetland B is located near College Ave. Wetland C is located near the intersection of I-65 and I-70. Wetland D is located near the intersection of I-65 and I-70. Wetland E, F, G, H, I, and J are located near the intersection of I-65 and I-70. Wetland K is located near Roosevelt Ave.
- Stormwater Features:** Stormwater Feature 1 and Stormwater Feature 2 are marked with blue arrows and labels.
- Proposed Bridge Structures:** Black lines and rectangles indicate the proposed bridge structures for the interchange.
- Highways:** I-65 and I-70 are shown with their respective shields.
- Roads and Landmarks:** College Ave, Roosevelt Ave, CSX Railroad, Legacy Learning Center, Brookside Ave, and Pogues Run Trail are labeled.
- Historic Districts:** Old Northside Historic District and Chatham-Arch Historic District are labeled.
- Other Features:** NB4, NB5, and 11th St are also labeled.

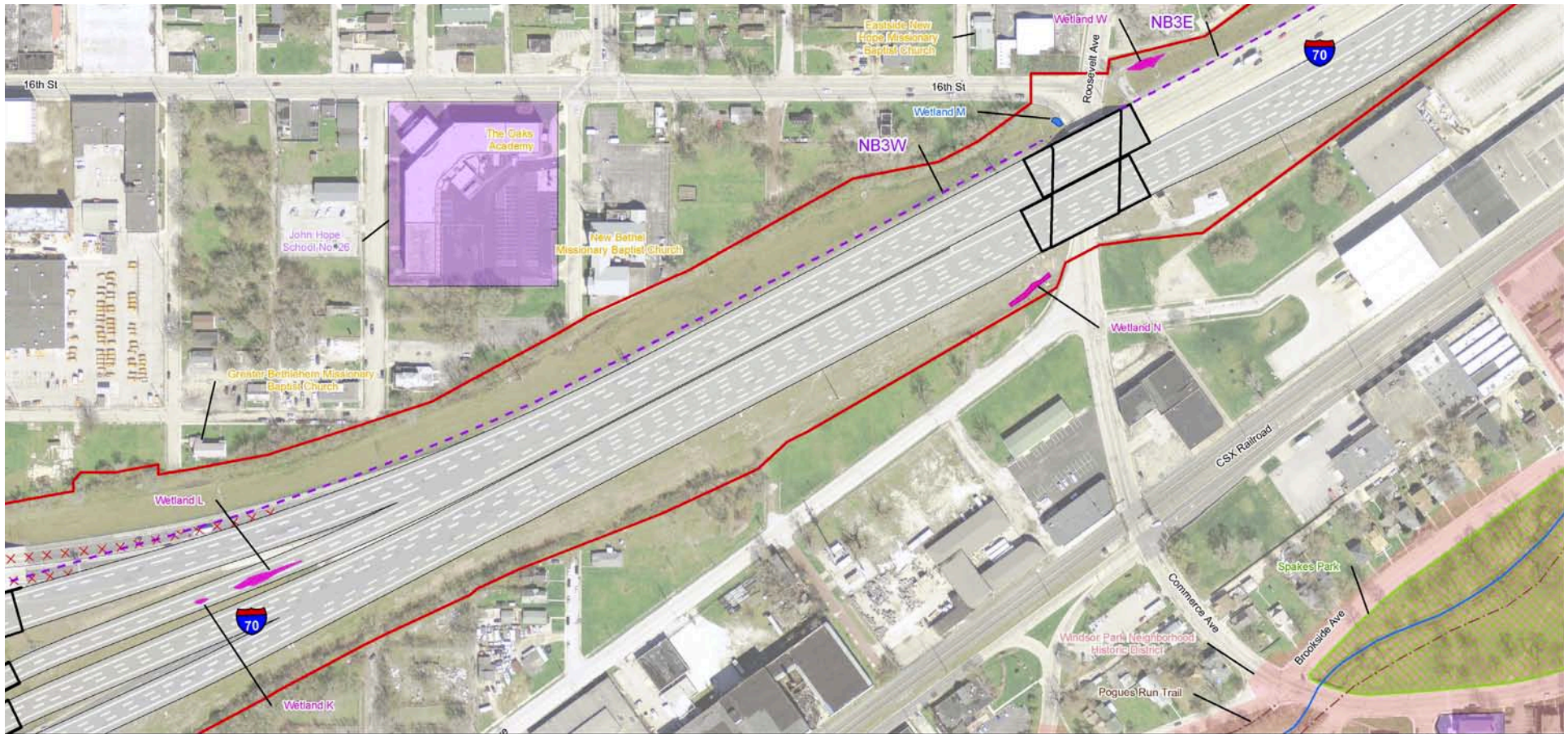
	Project Limits		Do Not Disturb Area		Non-Regulated Wetland Features
	Proposed Pavement		Parks		Regulated Wetland Features
	Proposed Bridges		Trails		Pogues Run
	Proposed Retaining Walls		Historic Districts		Stormwater Feature
	Evaluated Noise Barriers		Historic Properties		
	Removed Pavement				

A horizontal number line is shown with tick marks at 0, 200, and 400. The word "Feet" is written at the right end of the line. A white rectangular segment is highlighted between the 100 and 200 marks, representing the distance from the first to the second stop.



ENVIRONMENTAL RESOURCES SUMMARY

PRELIMINARY ENVIRONMENTAL RESOURCES MAP - 6



Legend

Page 6 of 12

- | | | |
|--------------------------|---------------------|--------------------------------|
| Project Limits | Do Not Disturb Area | Non-Regulated Wetland Features |
| Proposed Pavement | Parks | Regulated Wetland Features |
| Proposed Bridges | Trails | Pogues Run |
| Proposed Retaining Walls | Historic Districts | Stormwater Feature |
| Evaluated Noise Barriers | Historic Properties | |
| Removed Pavement | | |

Environmental Features Map

Note: Design information is preliminary and may change slightly during final design

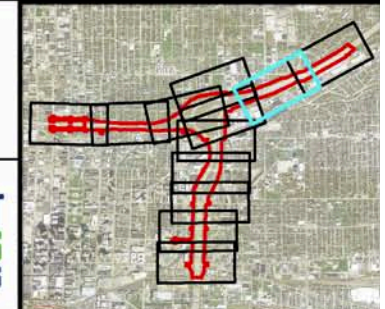
Des. Nos. 1592385 & 1600808

North Split Project

1 inch = 200 feet



0 200 400 Feet



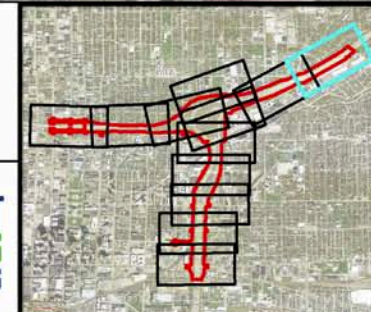


NORTH SPLIT
UPGRADES
DRIVING PROGRESS

	Project Limits		Do Not Disturb Area		Non-Regulated Wetland Features
	Proposed Pavement		Parks		Regulated Wetland Features
	Proposed Bridges		Trails		Pogues Run
	Proposed Retaining Walls		Historic Districts		Stormwater Feature
	Evaluated Noise Barriers		Historic Properties		
	Removed Pavement				

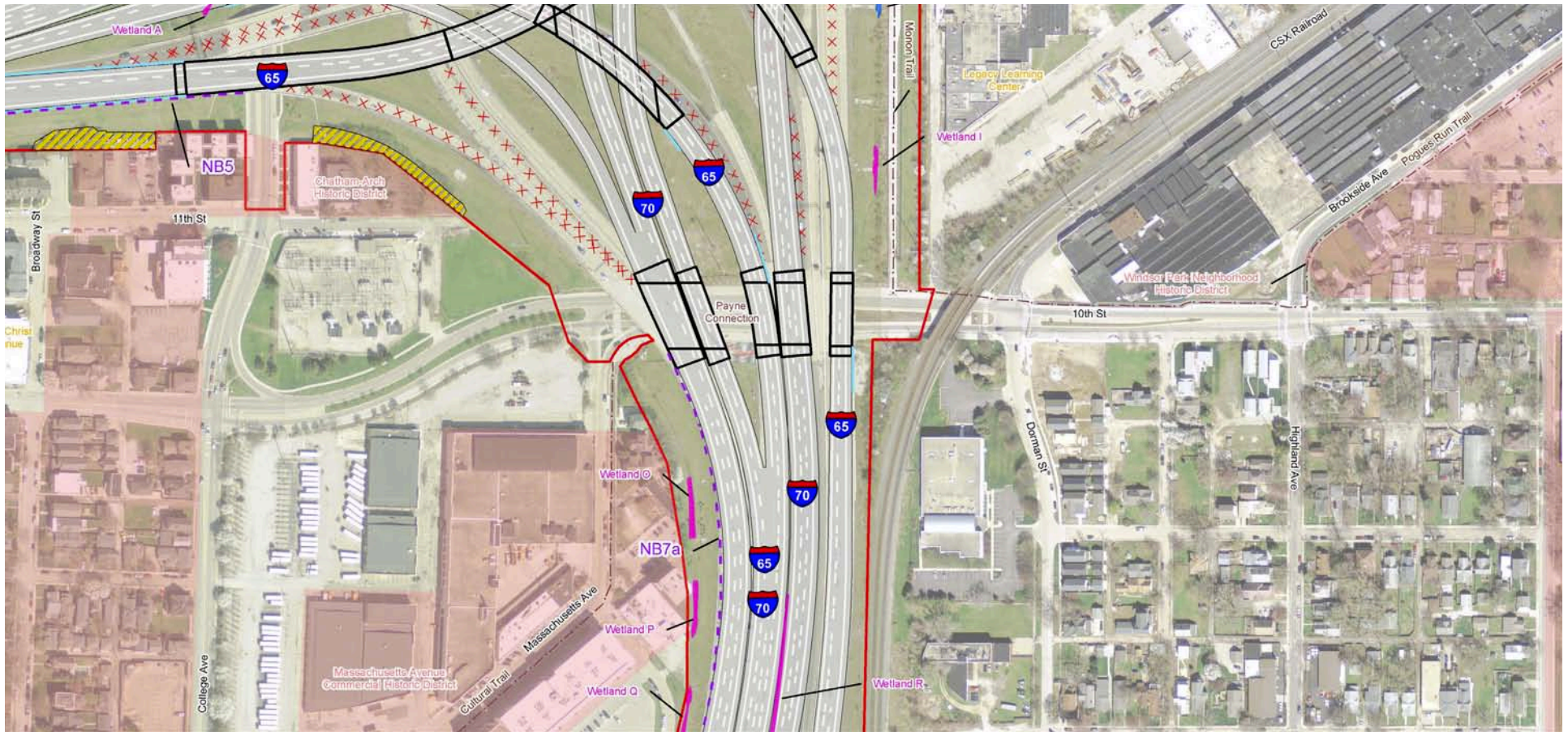
Note: Design information is preliminary and may change slightly during final design
Des. Nos. 1592385 & 1600808
North Split Project

0 200 400 Feet



ENVIRONMENTAL RESOURCES SUMMARY

PRELIMINARY ENVIRONMENTAL RESOURCES MAP - 8



Legend

Page 8 of 12

- | | | |
|--------------------------|---------------------|--------------------------------|
| Project Limits | Do Not Disturb Area | Non-Regulated Wetland Features |
| Proposed Pavement | Parks | Regulated Wetland Features |
| Proposed Bridges | Trails | Pogues Run |
| Proposed Retaining Walls | Historic Districts | Stormwater Feature |
| Evaluated Noise Barriers | Historic Properties | |
| Removed Pavement | | |

Environmental Features Map

Note: Design information is preliminary and may change slightly during final design

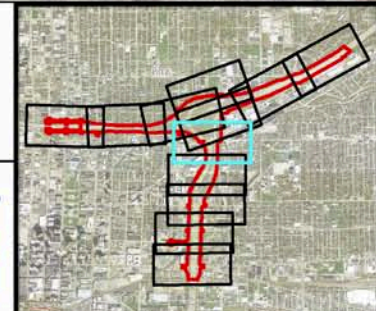
Des. Nos. 1592385 & 1600808

North Split Project

1 inch = 200 feet

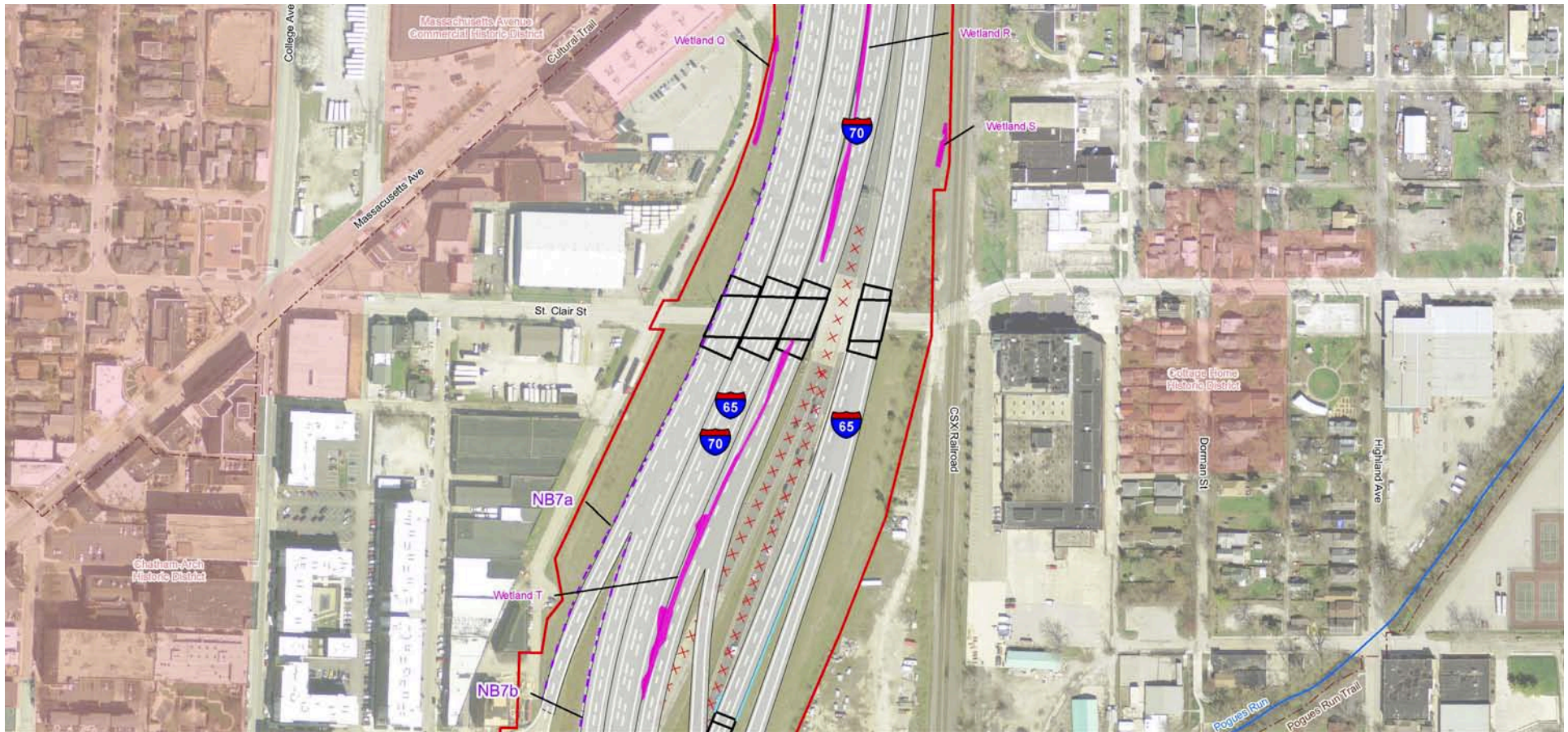


0 200 400 Feet



ENVIRONMENTAL RESOURCES SUMMARY

PRELIMINARY ENVIRONMENTAL RESOURCES MAP - 9



Legend

Page 9 of 12

- | | | |
|--------------------------|---------------------|--------------------------------|
| Project Limits | Do Not Disturb Area | Non-Regulated Wetland Features |
| Proposed Pavement | Parks | Regulated Wetland Features |
| Proposed Bridges | Trails | Pogues Run |
| Proposed Retaining Walls | Historic Districts | Stormwater Feature |
| Evaluated Noise Barriers | Historic Properties | |
| Removed Pavement | | |

Environmental Features Map

Note: Design information is preliminary and may change slightly during final design

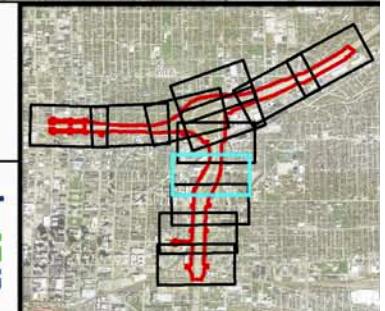
Des. Nos. 1592385 & 1600808

North Split Project

1 inch = 200 feet

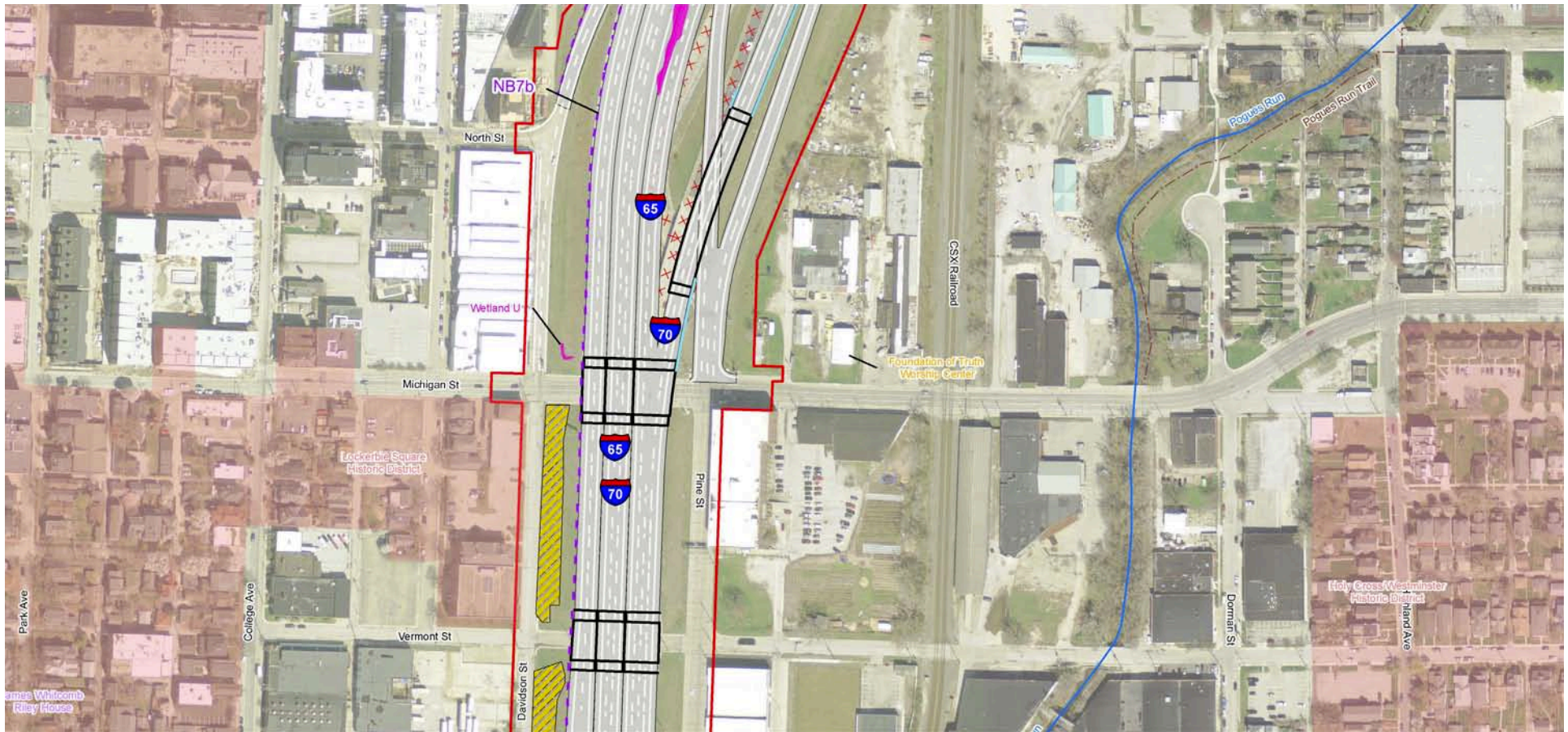


0 200 400 Feet



ENVIRONMENTAL RESOURCES SUMMARY

PRELIMINARY ENVIRONMENTAL RESOURCES MAP - 10



Legend

Page 10 of 12

- | | | |
|--------------------------|---------------------|--------------------------------|
| Project Limits | Do Not Disturb Area | Non-Regulated Wetland Features |
| Proposed Pavement | Parks | Regulated Wetland Features |
| Proposed Bridges | Trails | Pogues Run |
| Proposed Retaining Walls | Historic Districts | Stormwater Feature |
| Evaluated Noise Barriers | Historic Properties | |
| Removed Pavement | | |

Environmental Features Map

Note: Design information is preliminary and may change slightly during final design

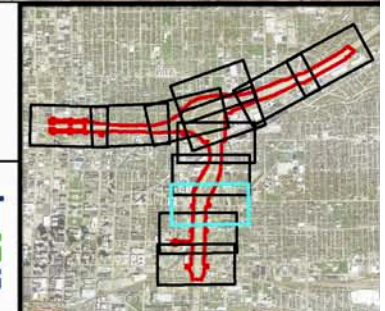
Des. Nos. 1592385 & 1600808

North Split Project

1 inch = 200 feet

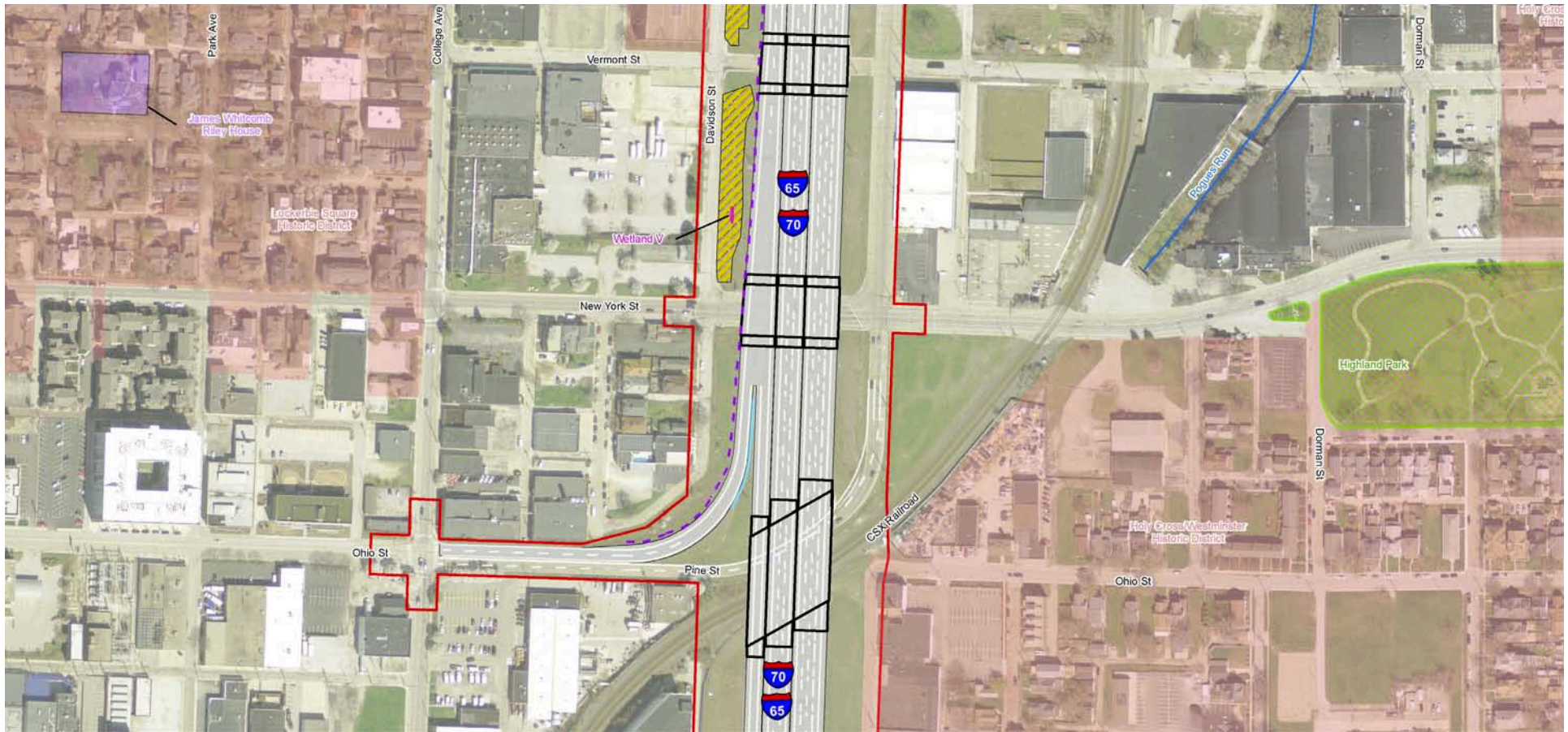


0 200 400 Feet



ENVIRONMENTAL RESOURCES SUMMARY

PRELIMINARY ENVIRONMENTAL RESOURCES MAP - 11



Legend

Page 11 of 12

- | | | |
|--------------------------|---------------------|--------------------------------|
| Project Limits | Do Not Disturb Area | Non-Regulated Wetland Features |
| Proposed Pavement | Parks | Regulated Wetland Features |
| Proposed Bridges | Trails | Piques Run |
| Proposed Retaining Walls | Historic Districts | Stormwater Feature |
| Evaluated Noise Barriers | Historic Properties | |
| Removed Pavement | | |

Environmental Features Map

Note: Design information is preliminary and may change slightly during final design

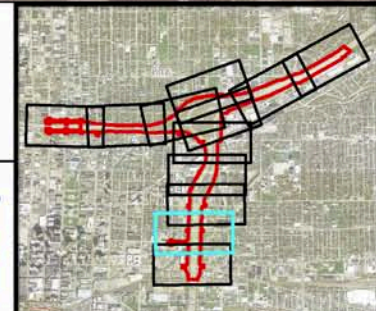
Des. Nos. 1592385 & 1600808

North Split Project

1 inch = 200 feet

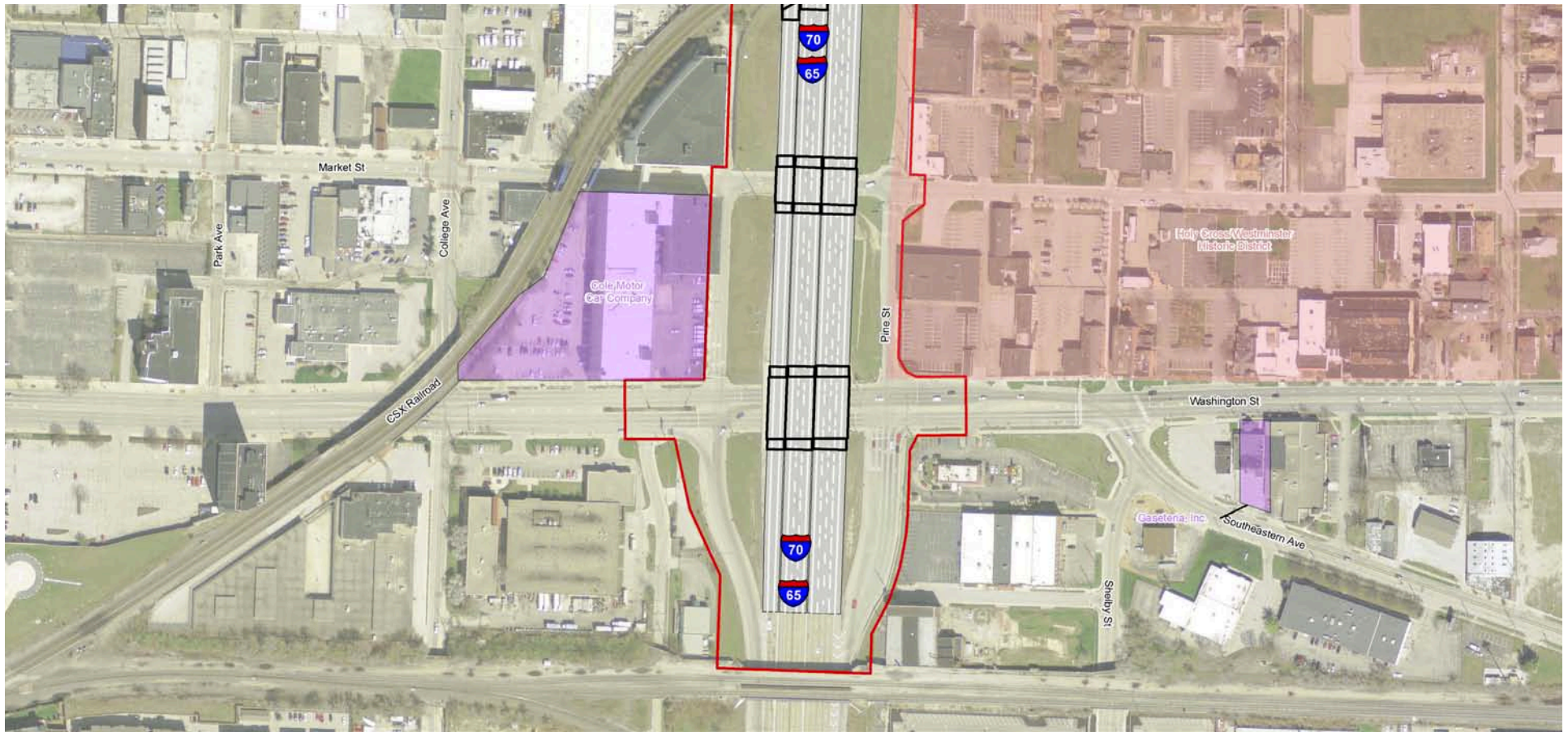


0 200 400 Feet



ENVIRONMENTAL RESOURCES SUMMARY

PRELIMINARY ENVIRONMENTAL RESOURCES MAP - 12



Legend

Page 12 of 12

- | | | |
|--------------------------|---------------------|--------------------------------|
| Project Limits | Do Not Disturb Area | Non-Regulated Wetland Features |
| Proposed Pavement | Parks | Regulated Wetland Features |
| Proposed Bridges | Trails | Pagues Run |
| Proposed Retaining Walls | Historic Districts | Stormwater Feature |
| Evaluated Noise Barriers | Historic Properties | |
| Removed Pavement | | |

Environmental Features Map

Note: Design information is preliminary and may change slightly during final design

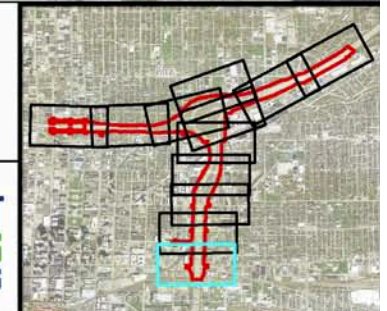
Des. Nos. 1592385 & 1600808

North Split Project

1 inch = 200 feet



0 200 400 Feet



ENVIRONMENTAL RESOURCES SUMMARY

SOUND BARRIERS

Design Summary

Five sound barriers were deemed potentially feasible and reasonable according to INDOT Noise Policy criteria. Based on benefited receptor surveys and other factors, INDOT determined two of the barriers (NB3W & NB3E) would be constructed, on the north side of I-70 east of the North Split.

Additional Noise Reduction Features

Continuous reinforced concrete pavement, jointless concrete bridges, and next generation pavement grooving will reduce noise throughout the project. Overall, noise is predicted to be lower than existing levels after construction.



ENVIRONMENTAL RESOURCES SUMMARY

MONON DETOUR

Monon Trail

The Monon Trail will be closed through the center of the North Split for most of project construction. A trail detour will be provided north, west, and southwest of the interchange.

Monon Detour

The north and west legs of the trail detour will remain in place, to be called the “Monon Loop.” Efforts are underway to potentially make the southwest segment permanent as well.

When the interchange is finished, the original Monon link will be reconstructed as a 14-foot trail, completing the Monon Loop.

