



Environmental Justice (EJ) Working Group

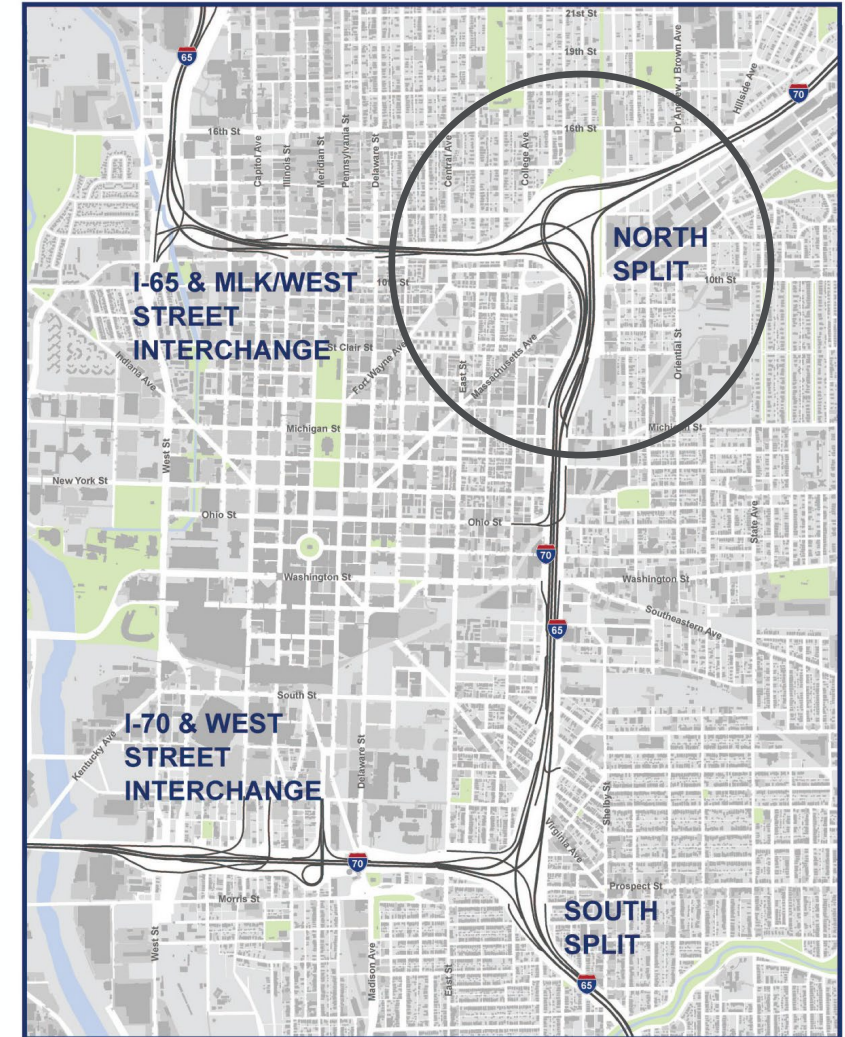
July 9, 2019



North Split Interchange

INDOT is preparing an environmental study for the North Split interchange

- Where I-65 and I-70 meet at the northeast corner of downtown inner loop
- Constructed 40 to 50 years ago
- Second-most heavily-traveled interchange in the state – 214,000 vehicles per day
- Project goals:
 - Replace deteriorated pavement and bridges
 - Improve safety
 - Improve traffic flow



North Split Project

Major Project Milestones

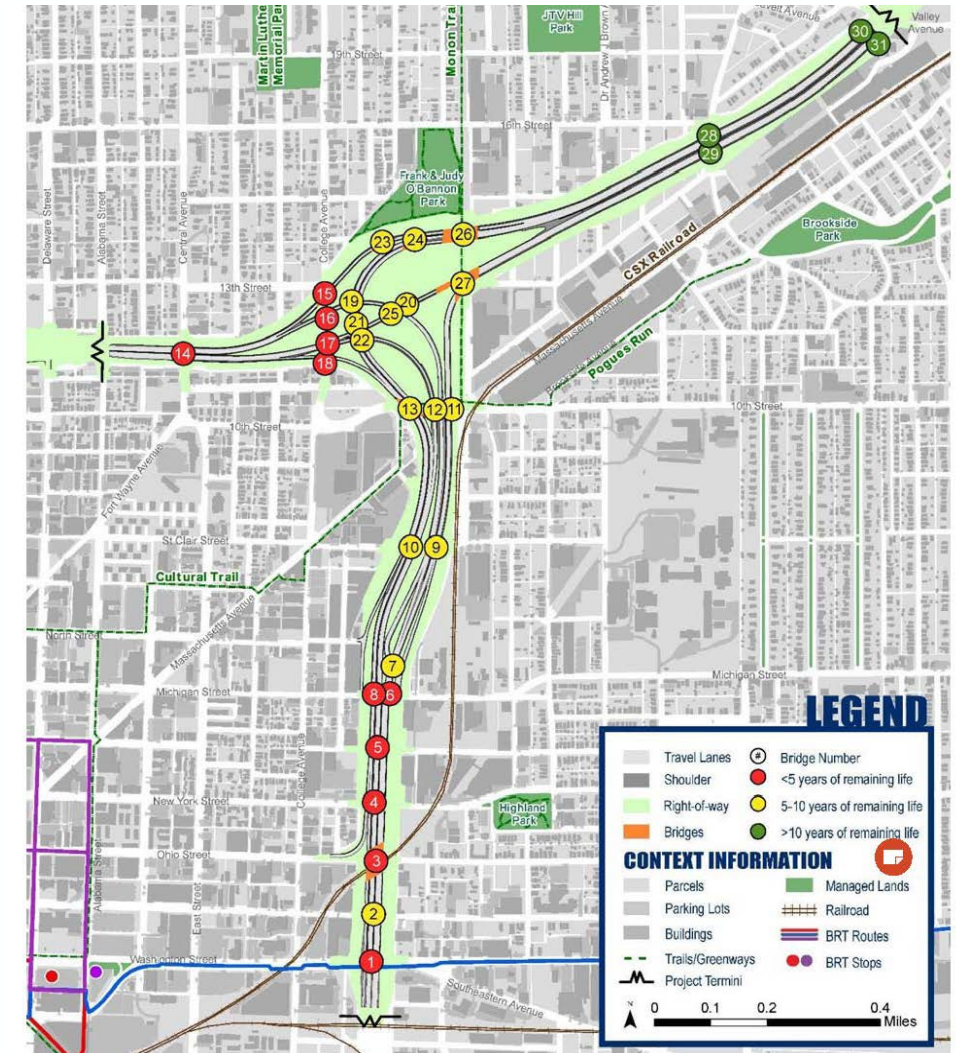
- September, 2017 – Project Initiation
- May, 2018 – System-Level Analysis of Downtown Interstates
- September, 2018 – Alternatives Screening Report
- 2019 – Project Refinement and Context Sensitive Solutions (CSS) process
- Mid-2020 – Environmental Assessment complete
- 2021 - 2022 – Project Construction



Physical Condition and Safety

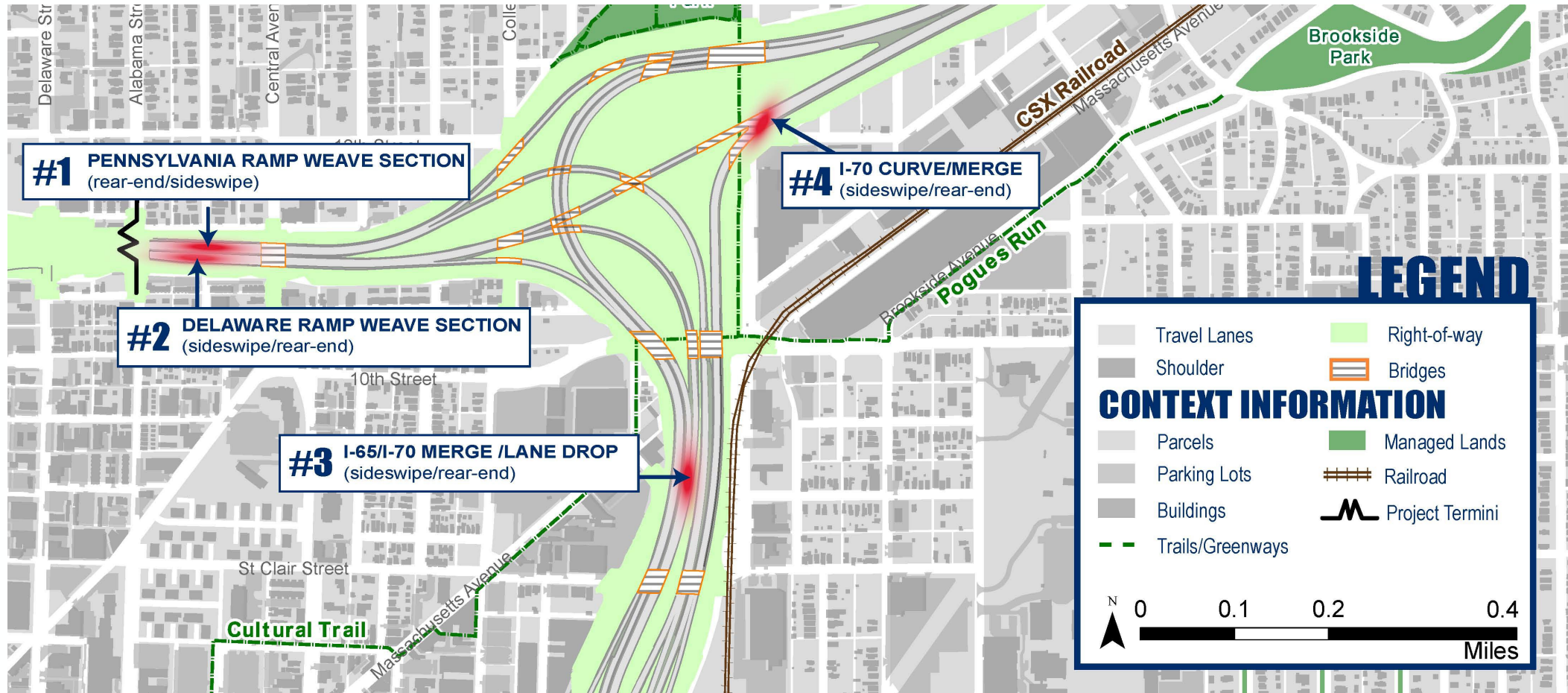
Deteriorated pavement and bridge conditions

- Constructed in the 1960s and 1970s – pavement is past its life expectancy
- Bridge conditions are poor and getting worse:
 - Under 5 years of life (11 bridges)
 - 5 - 10 years of life (16 bridges)
- Over 1,600 crashes from 2012 to 2016
- Most crashes rear-end and sideswipe



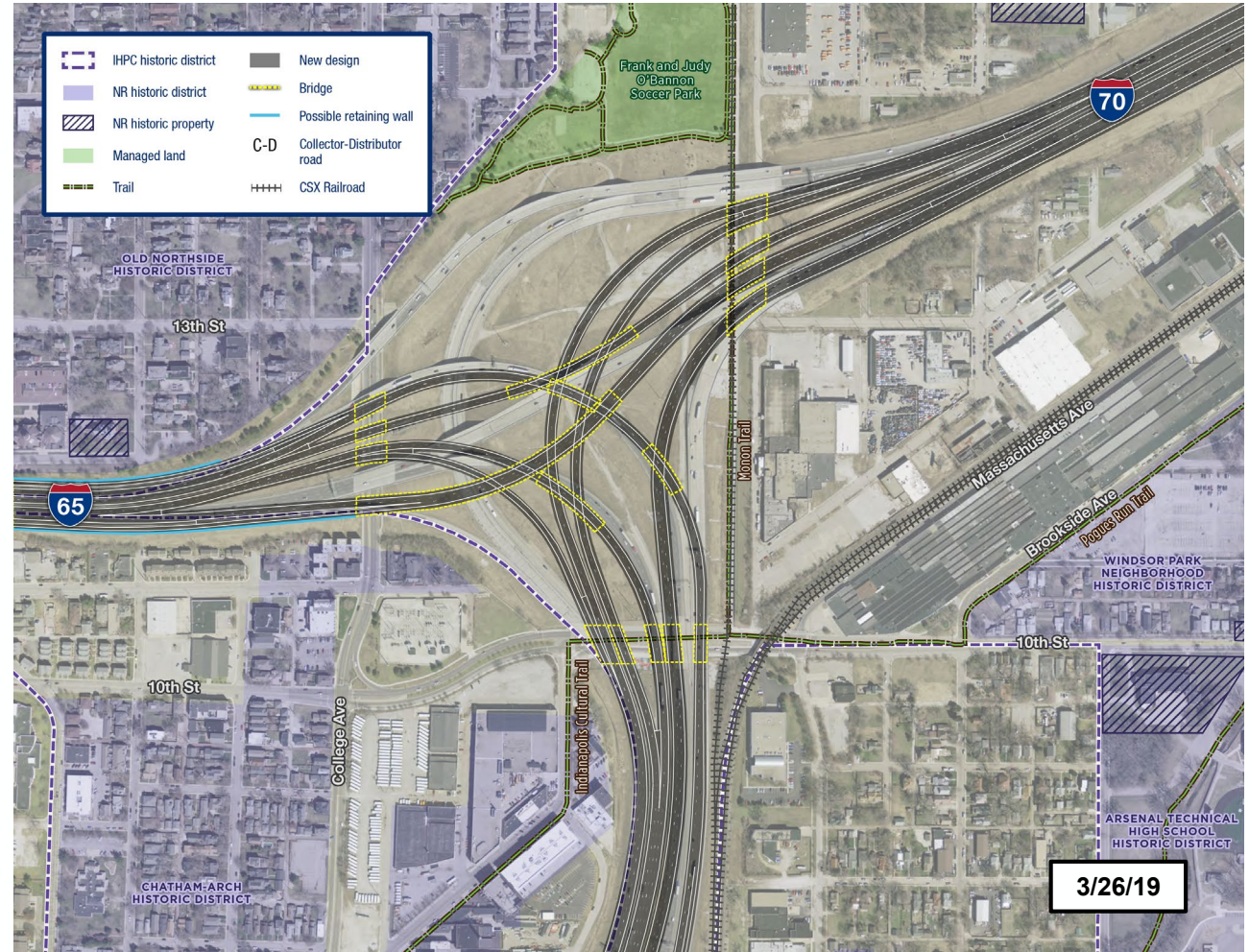
Safety – High Crash Locations

Top 4 Crash Locations



Preliminary Preferred Alternative

- Replaces all pavement and bridges
- Improves safety at the most hazardous locations
- Removes the worst bottlenecks
- More compact interchange
- Does not add through lanes
- Within existing right-of-way
- Minimizes outside walls
- Two restricted ramp movements
 - Delaware ramp to I-70 only
 - Pennsylvania exit from I-65 only



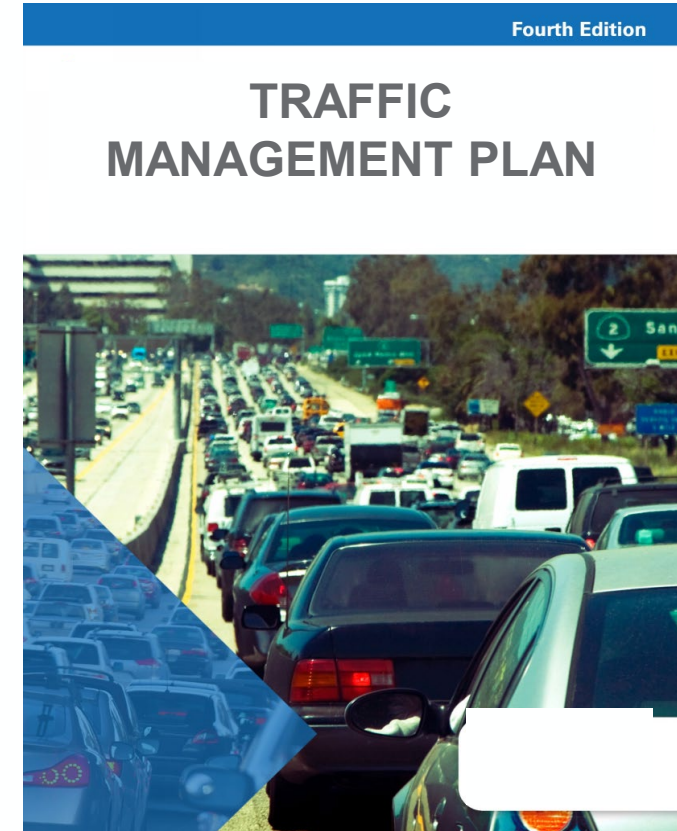
Construction - Maintenance of Traffic

- Two-year period of construction (2021-2022)
- Full closure not anticipated
- Sequence still to be determined
- Potential plan: maintain access on north leg or access on east leg, but not both
- Short-term closures of local cross streets for bridge construction
- Adjacent local streets will remain open to maintain downtown access



Traffic Management Plan (TMP)

- TMP Plan Components
 - Temporary Traffic Control Plan
 - Traffic Operations Plan
 - Public Information Plan
 - TMP Task Force
- TMP Task Force
 - TMP Leadership Team
 - Transportation Demand Management Team
 - Traffic Operations/Incident Management
 - Local Roadway Impacts Team
 - Public/Stakeholder Outreach Team
- Ongoing coordination with media, elected officials and stakeholders



North Split Project Summary

Objective: Reconstruct the Interchange

- Replace pavement and bridges
- Address major safety problems
- Eliminate bottlenecks to improve level of service

Consider the Neighborhood Context

- Do not add through lanes
- Minimize outside walls
- Enhance neighborhood integration
- Provide neighborhood connectivity



 **NORTH SPLIT**
UPGRADES
DRIVING PROGRESS

**CSS Process
Update**



What is CSS?

“Context Sensitive Solutions and Design” (CSS/D) is a collaborative, interdisciplinary decision-making process and design approach that involves all stakeholders to develop a transportation facility that fits its physical setting.

- US Department of Transportation Federal Highway Administration

CSS Process

Three Part Process

Part 1: Visioning

Inventory and assessment, with community input

Part 2: Preliminary Design Concepts

Review of CSS options, with community input

Part 3: CSS Project Guidelines

Finalize CSS components, develop specifications



CSS Visioning Process

6 Neighborhood Workshops
2 Local Business Groups
2 Rethink Coalition Meetings

275+ Residents Engaged
2,650 Comments Received



CSS Public Workshops

Neighborhood Associations

Bates-Hendricks
Chatham Arch
Cole-Noble
Cottage Home
Holy Cross
Herron-Morton
Lockerbie Square
Martindale - Brightwood
Old Northside
Old Southside
St. Joseph
Windsor Park
Woodruff Place

Local Business Groups

Interstate Business Group
Stadium Village Business Association



Visioning Process Elements

LANDFORM ELEMENTS



- May include existing or proposed landforms and land treatments, graded terrace landings, transitional slopes, natural forms

LOCAL INFRASTRUCTURE ELEMENTS



- May include pavement treatments, vehicular bridges, pedestrian bridges, traffic barriers, sidewalks, planters, trails, bike lanes, signage, lighting

INTERCHANGE INFRASTRUCTURE ELEMENTS



- May include retaining walls, fencing, rip-rap, slope stabilization, bridge structural forms, pier shape design

VEGETATION ELEMENTS



- May include existing vegetation preservation and protection, proposed plantings such as: trees, shrub massing areas, seeded areas, etc.

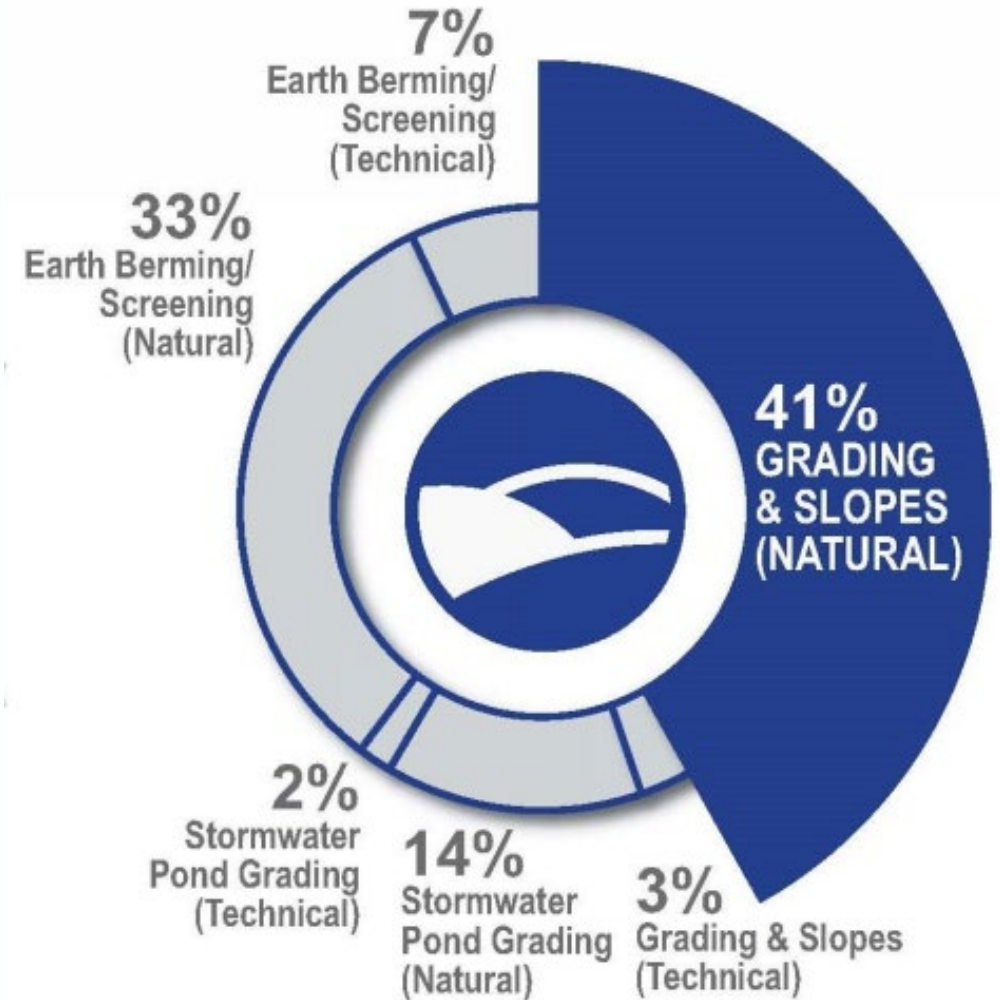
COMMUNITY & PUBLIC ART ELEMENTS



- May include gateway elements, under-bridge treatments, community nodes, plaza areas, art integration components, etc.

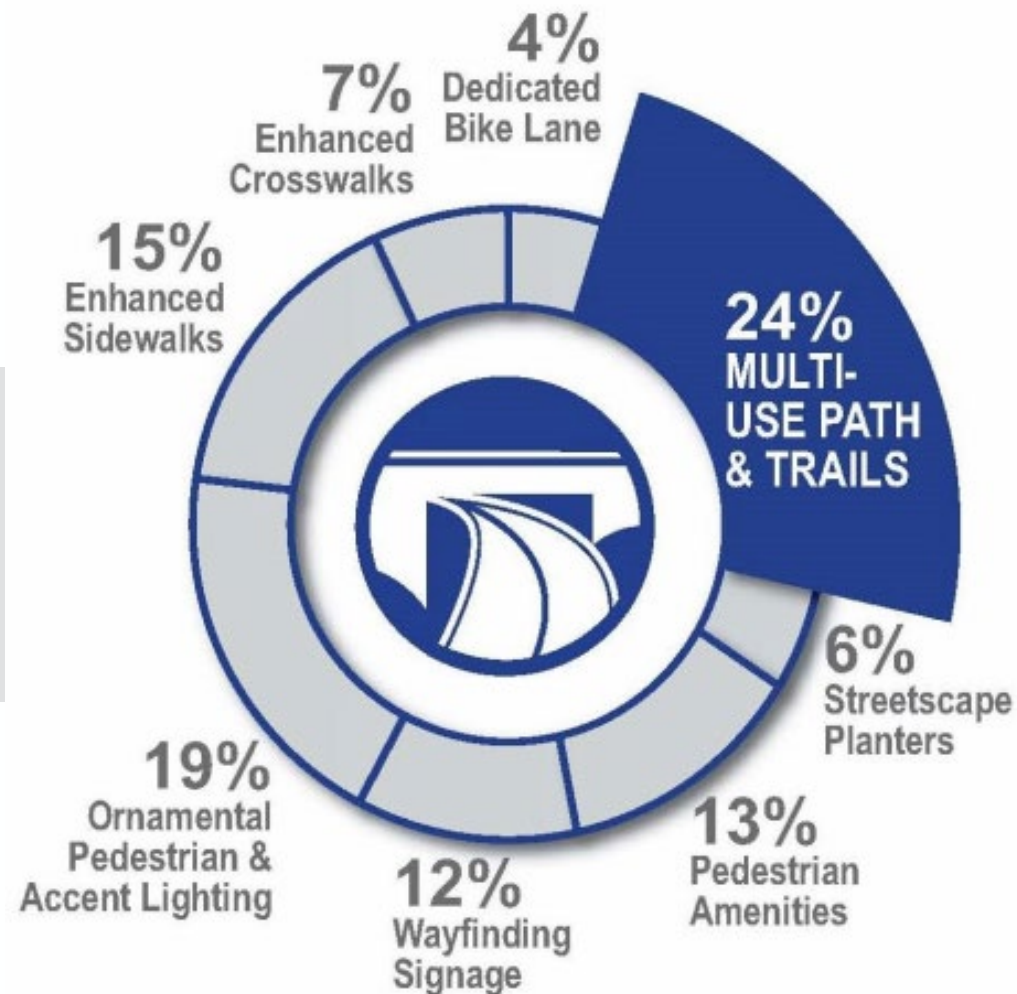
Visioning Process Results

LANDFORM ELEMENTS



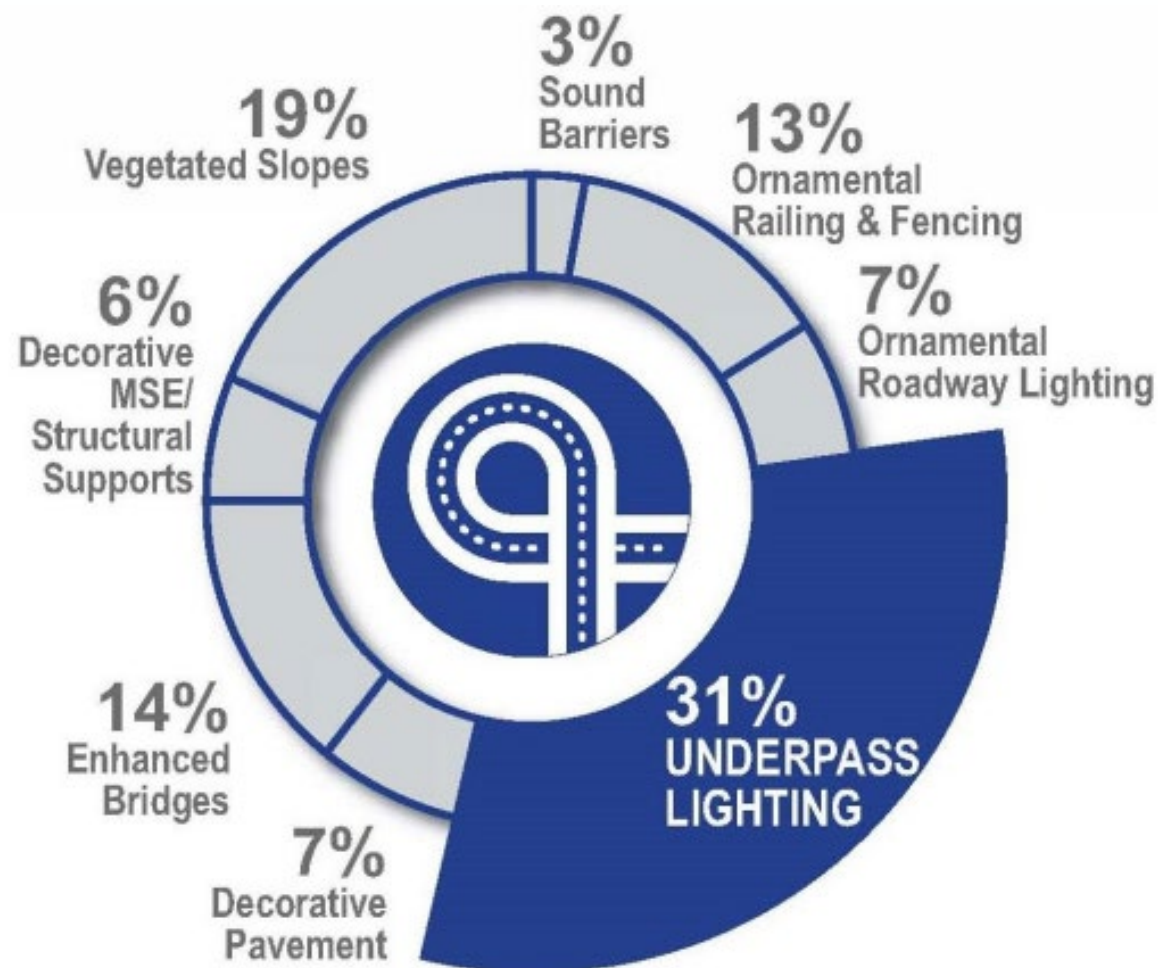
Visioning Process Results

LOCAL INFRASTRUCTURE ELEMENTS



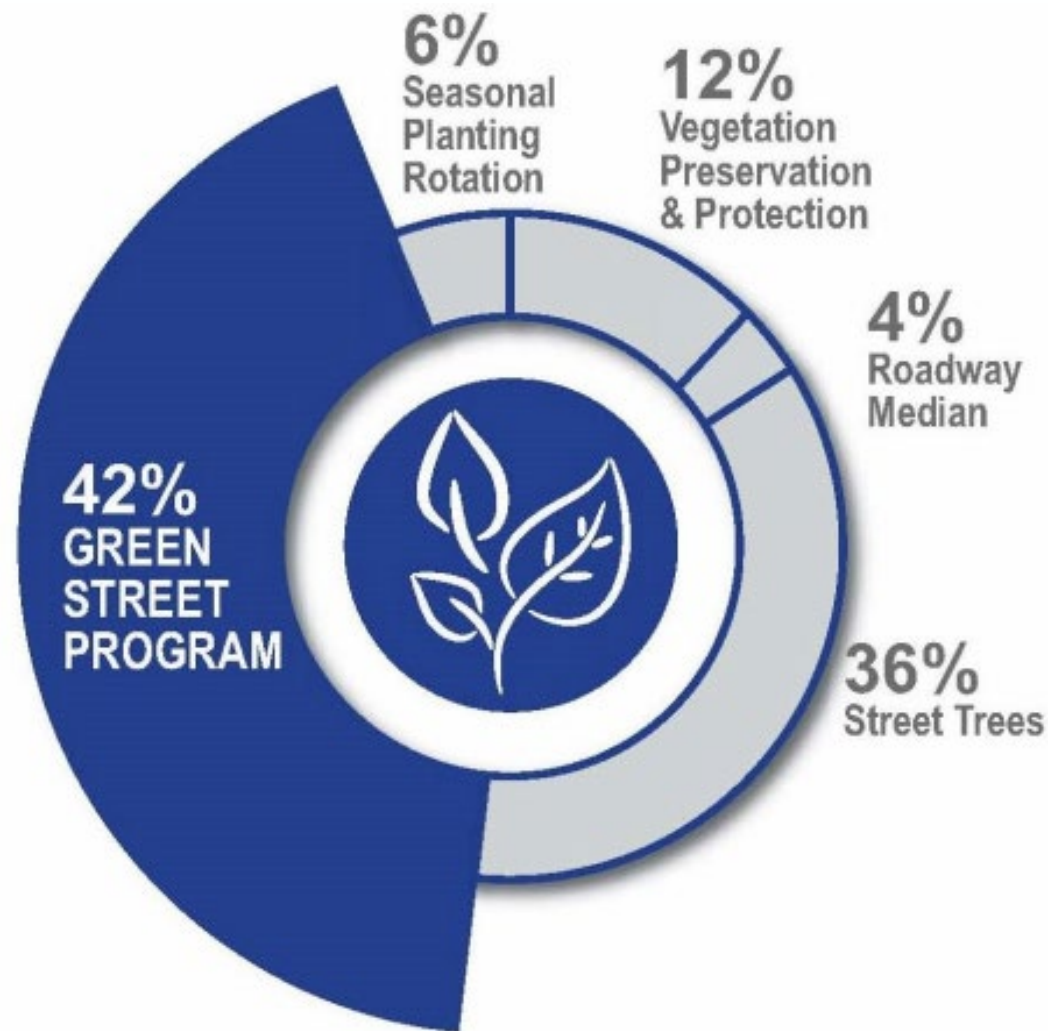
Visioning Process Results

INTERCHANGE INFRASTRUCTURE ELEMENTS



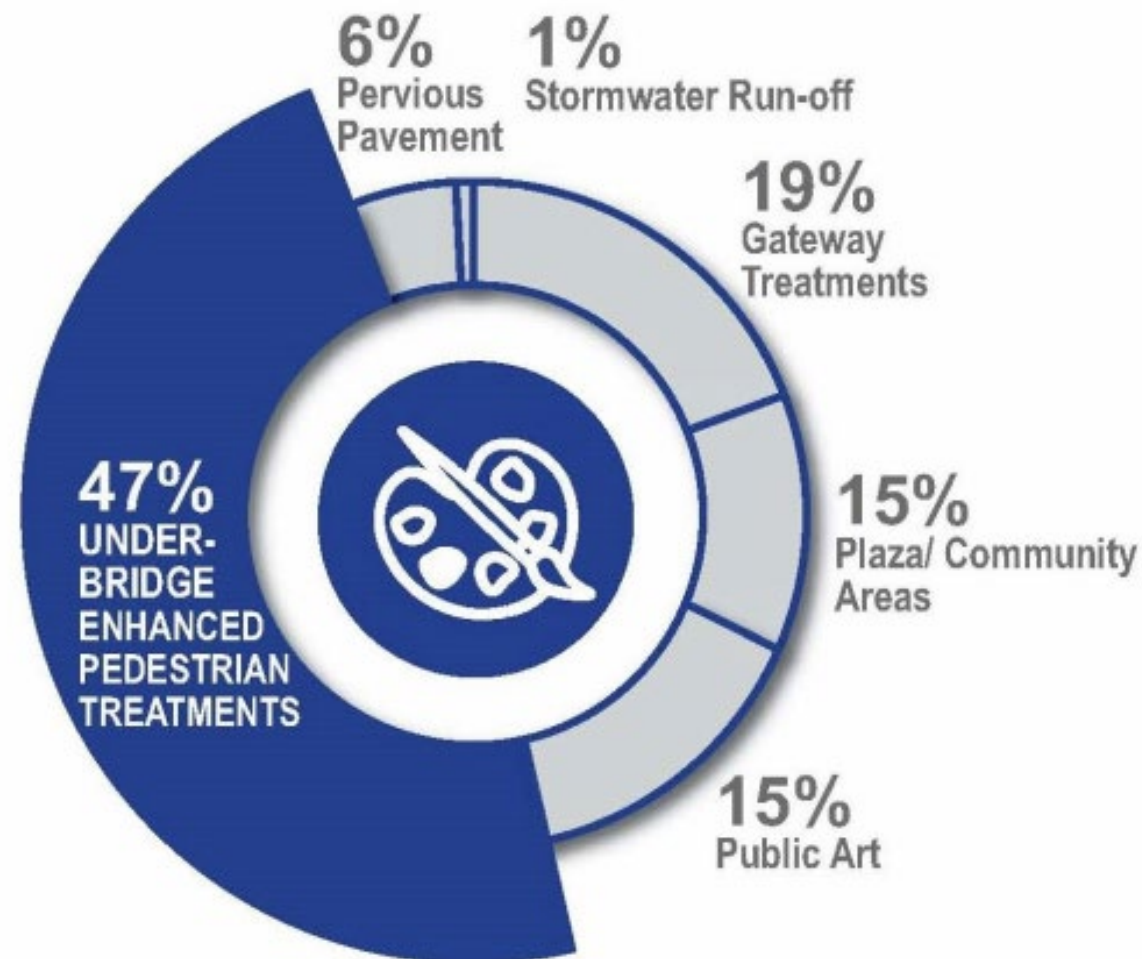
Visioning Process Results

VEGETATION ELEMENTS



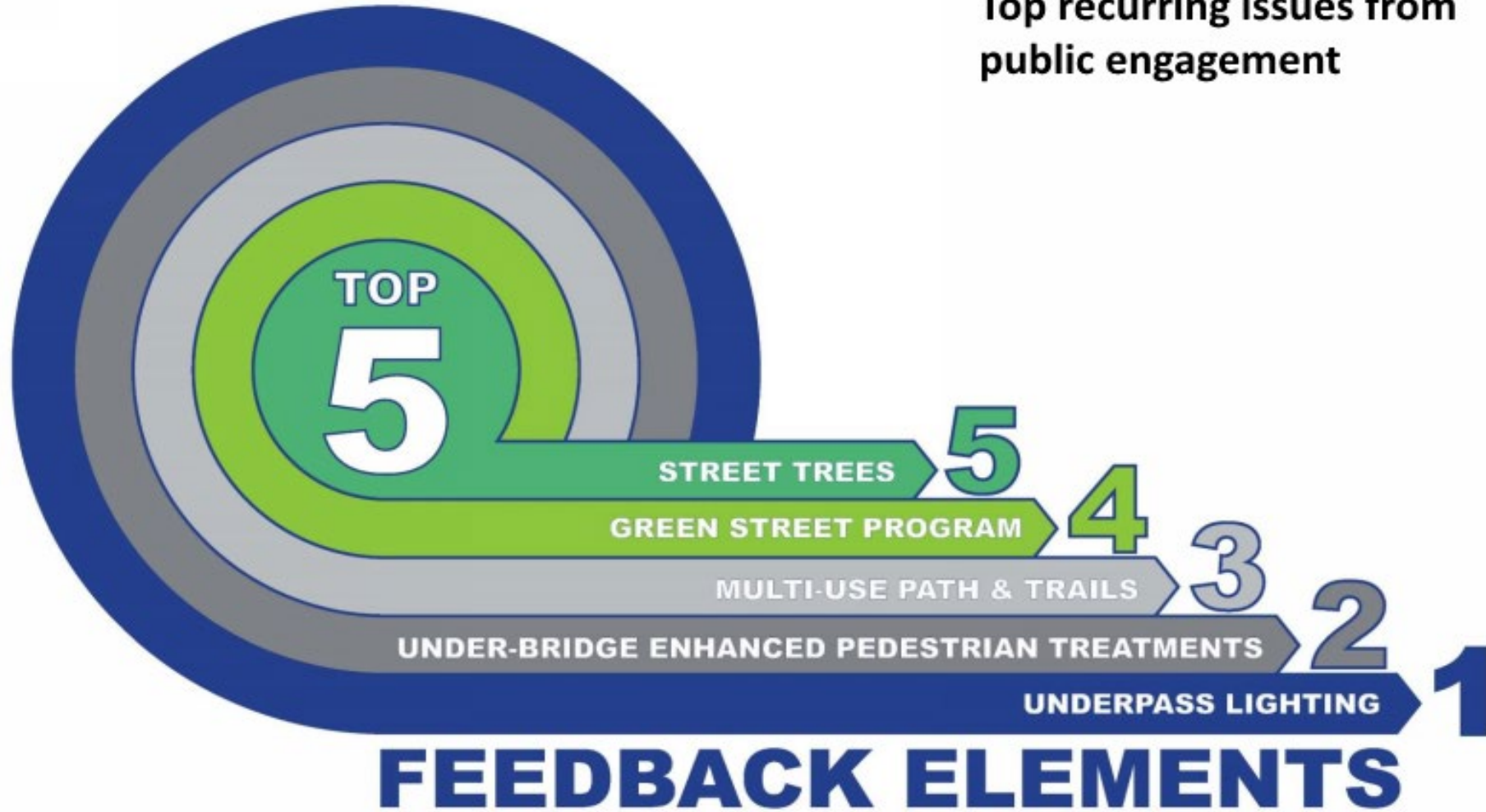
Visioning Process Results

COMMUNITY AND PUBLIC ART ELEMENTS



Visioning Process – Summary of Issues

Top recurring issues from
public engagement



CSS Process – Next Steps

Review CSS Options (Summer 2019)

- Develop preliminary treatment concepts
- Hold second round of neighborhood meetings and public open house
- Meet with CAC and other stakeholders
- Meet with CSS Resource Group

Develop CSS Guidelines (Fall 2019)

- Finalize CSS components
- Develop specifications for construction



 **NORTH SPLIT**
UPGRADES
DRIVING PROGRESS

Public Survey




Public Survey - Content

Conduct online survey:

- Better understand impacts of the project
- Help identify and address potential disproportionately high and adverse effects on minority and low-income communities

Questions focus on:

- Use of local roads and interstates in the project area
- How the project could affect respondents
- Respondent's knowledge of the North Split project
- Use of North Split outreach tools



Public Survey
Summer 2019

The Indiana Department of Transportation (INDOT) is preparing to reconstruct the I-65/I-70 North Split Interchange in downtown Indianapolis. The project will repair deteriorating bridges, upgrade pavement conditions in the area, lessen congestion and improve safety for Indiana's second-busiest interchange. Visit the project website (www.northsplit.com) for more information.

The following survey will assist the project team in identifying and addressing potential benefits and burdens of the project on residents. If you prefer to complete the survey by phone, please call (317) 917-5240.

We appreciate your feedback!

PROJECT-SPECIFIC FEEDBACK

| | |
|--|--|
| <p>Have you heard of the North Split project before notification of this survey?</p> <ul style="list-style-type: none">• Yes• No• Not sure <p>Have you visited the North Split project website (www.northsplit.com)?</p> <ul style="list-style-type: none">• Yes• No• Not sure <p>What is the best method to keep you informed on the North Split project? (Select all that apply.)</p> <ul style="list-style-type: none">• Email• Text message• Social media• Postal mail• Public meeting• Website• Other <p>If you'd like to receive postal mail, please provide your address:</p> <p>_____</p> <p>_____</p> | <p>To which of the following North Split outreach tools are you subscribed/following? (Select all that apply.)</p> <ul style="list-style-type: none">• Email• Text message• Social media• Public meeting(s)• Website <p>If you would like to subscribe to our e-newsletter or text messaging service, please enter your email and/or mobile number below.</p> <p>_____</p> <p>Why do you travel in the North Split project area? (Select all that apply.)</p> <ul style="list-style-type: none">• I live in an adjacent neighborhood• Work• School• Doctor's appointment or medical trips• Entertainment/shopping• Visiting friends/family• Church |
|--|--|

www.northsplit.com

Public Survey - Promotion

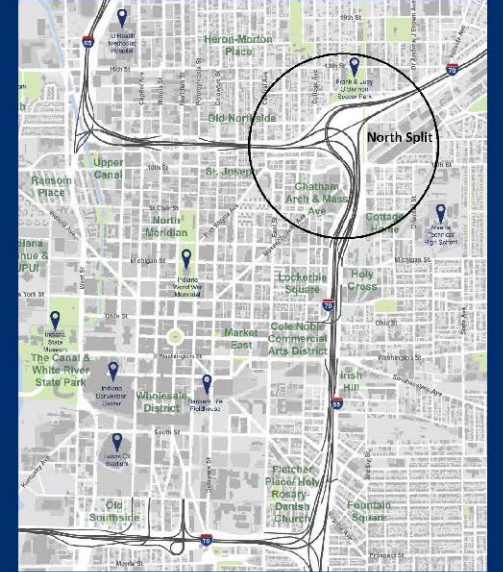
- Mail 43,000+ postcards to residents immediately adjacent to the project area and one interchange beyond
- Includes these ZIP Codes:
 - 46201
 - 46202
 - 46204
 - 46218
- Survey is for everyone – not just these residents
- Target for mailing is July 24 to August 1

NORTH SPLIT UPGRADES DRIVING PROGRESS

The I-65/I-70 North Split Interchange project in downtown Indianapolis will repair deteriorating bridges, upgrade pavement conditions in the area, lessen congestion and improve safety for Indiana's second-busiest interchange.

INDOT is conducting an online survey to determine potential impacts and benefits of the North Split project.

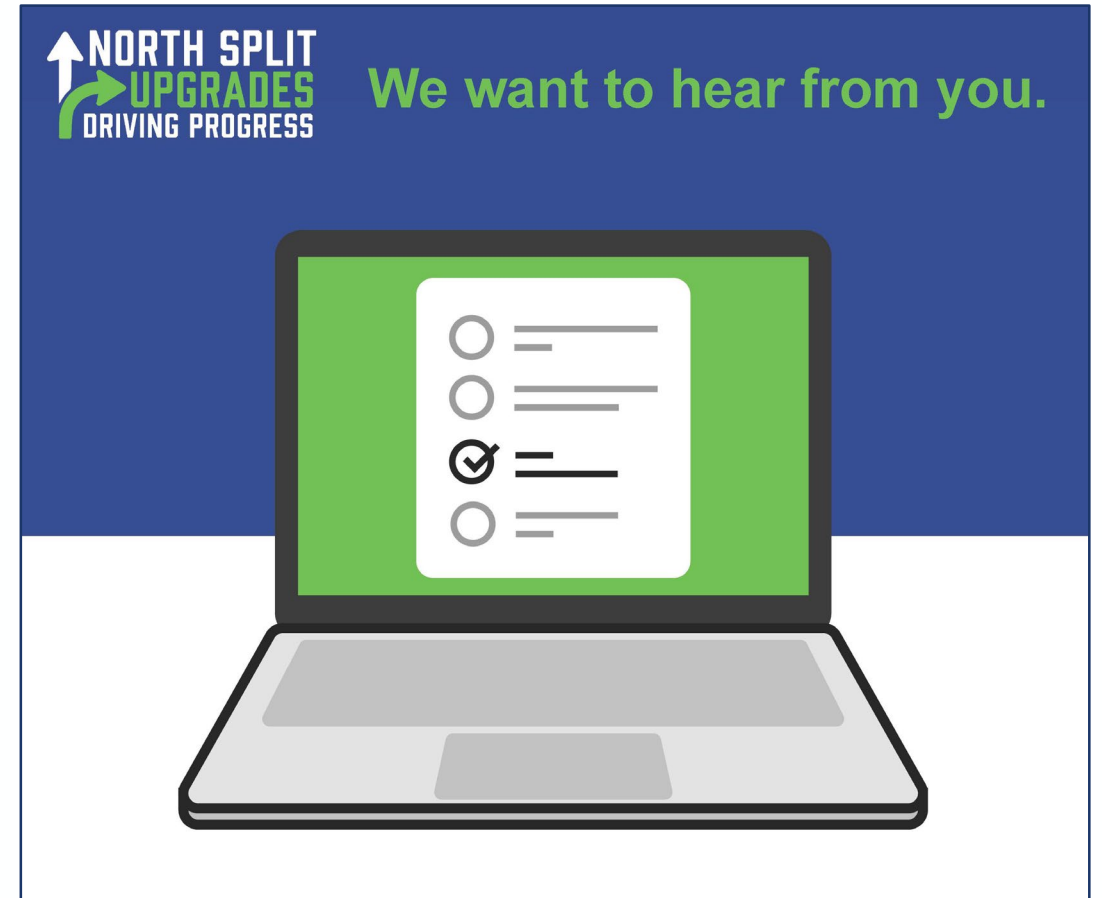
We want to hear from you.



northsplit.com/survey

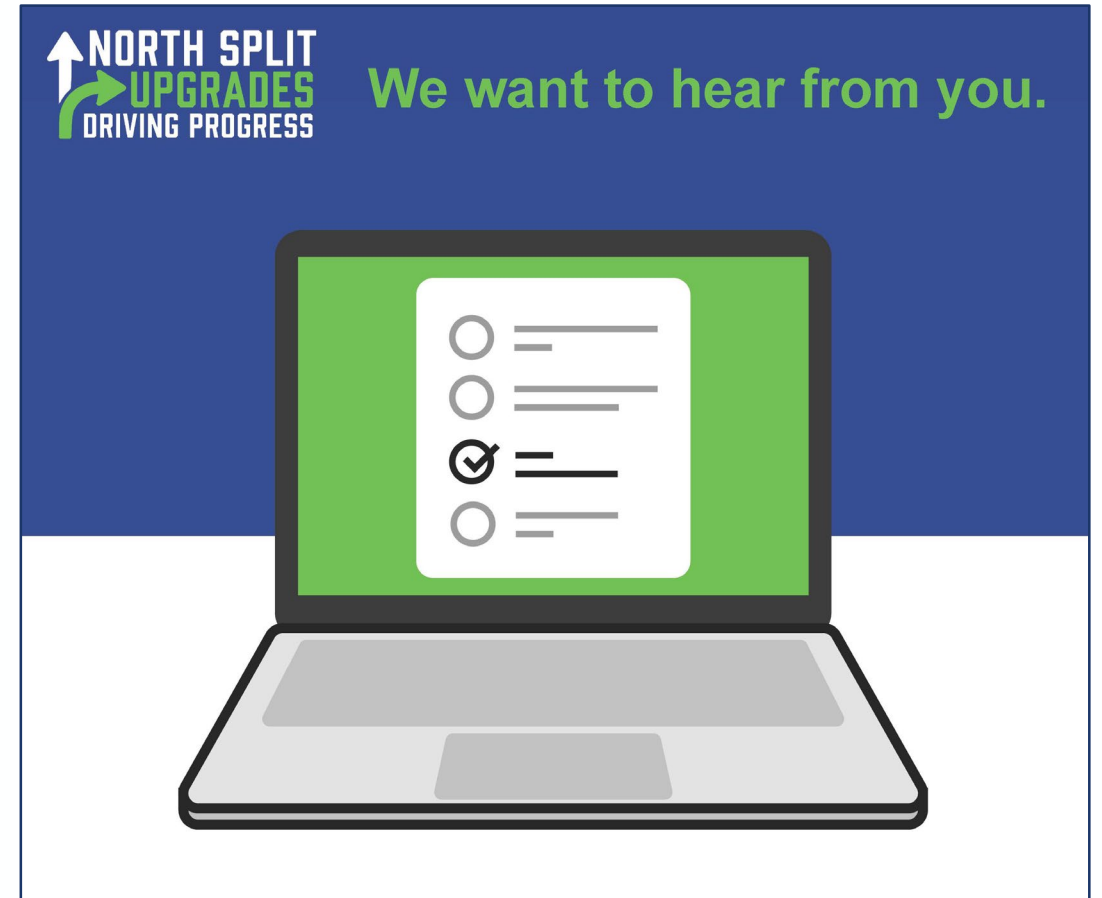
Public Survey - Promotion

- North Split and INDOT Facebook and Twitter accounts
- Paid Facebook ads
- Text messages
- E-newsletter
- Project website
- Public open house (hard copies available)
- CSS neighborhood meetings
- EJ Working Group



Public Survey - Promotion

- Hard copies in libraries, community centers and neighborhood meetings
- Fliers in grocery stores and other local places
- Booth at the Transit Center
- Word-of-mouth

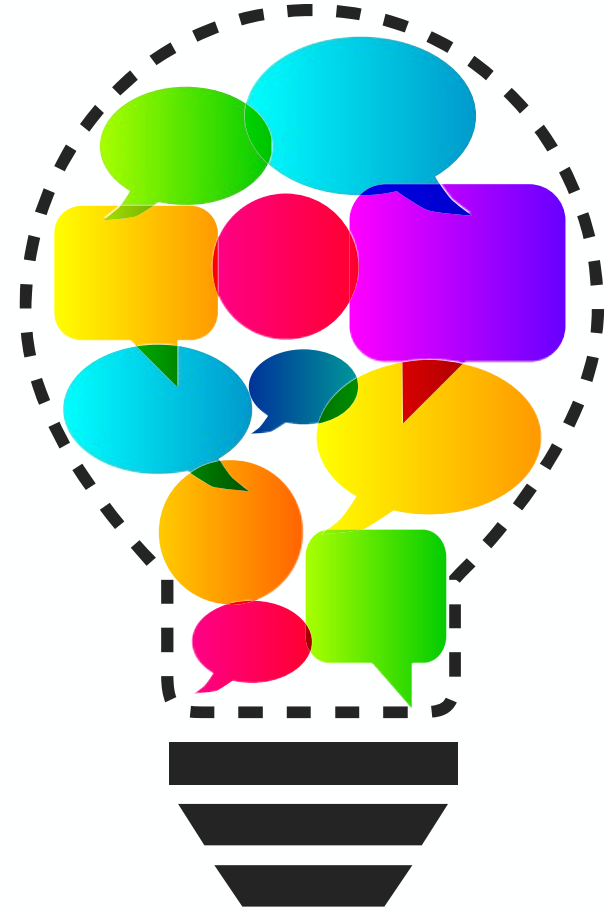


Public Survey – Group Exercise

How/where else can we promote the survey?

Groups will brainstorm:

- Online opportunities
- Fliers and signage
- Hard copies
- Other opportunities



Next Steps

- July 17 – Launch survey
- Week of August 5 – Community Advisory Committee meeting
- July/August – Host CSS neighborhood meetings and public open house
- August 31 – Survey collection ends
- Analyze impacts in the Environmental Assessment (EA)
- Mid-2020 – Publish EA





Questions and Feedback



Submit Comments and Ideas: info@northsplit.com

Contact:

North Split Public Involvement Team

PO Box 44141

Indianapolis, IN 46244

Phone: 317.749.0309

