

- I-65/I-70 North Split Interchange Reconstruction Project Area
- I-65/I-70 North Split Interchange Reconstruction Project APE
- NRHP/IRHSS listed Historic district
- NRHP listed - Individual property

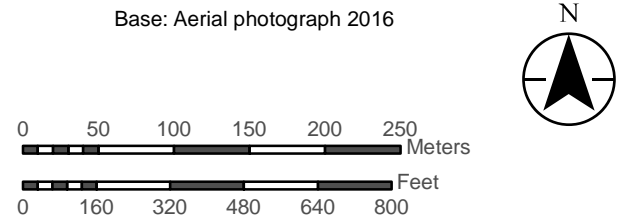
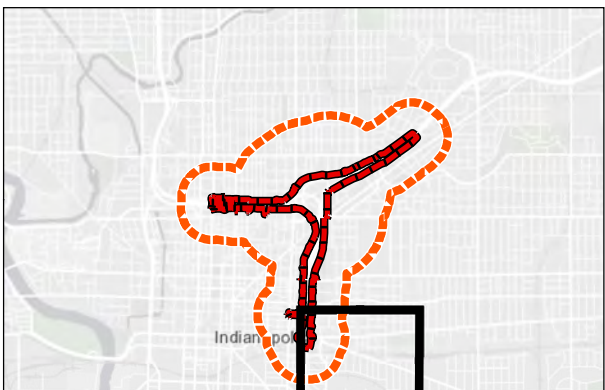
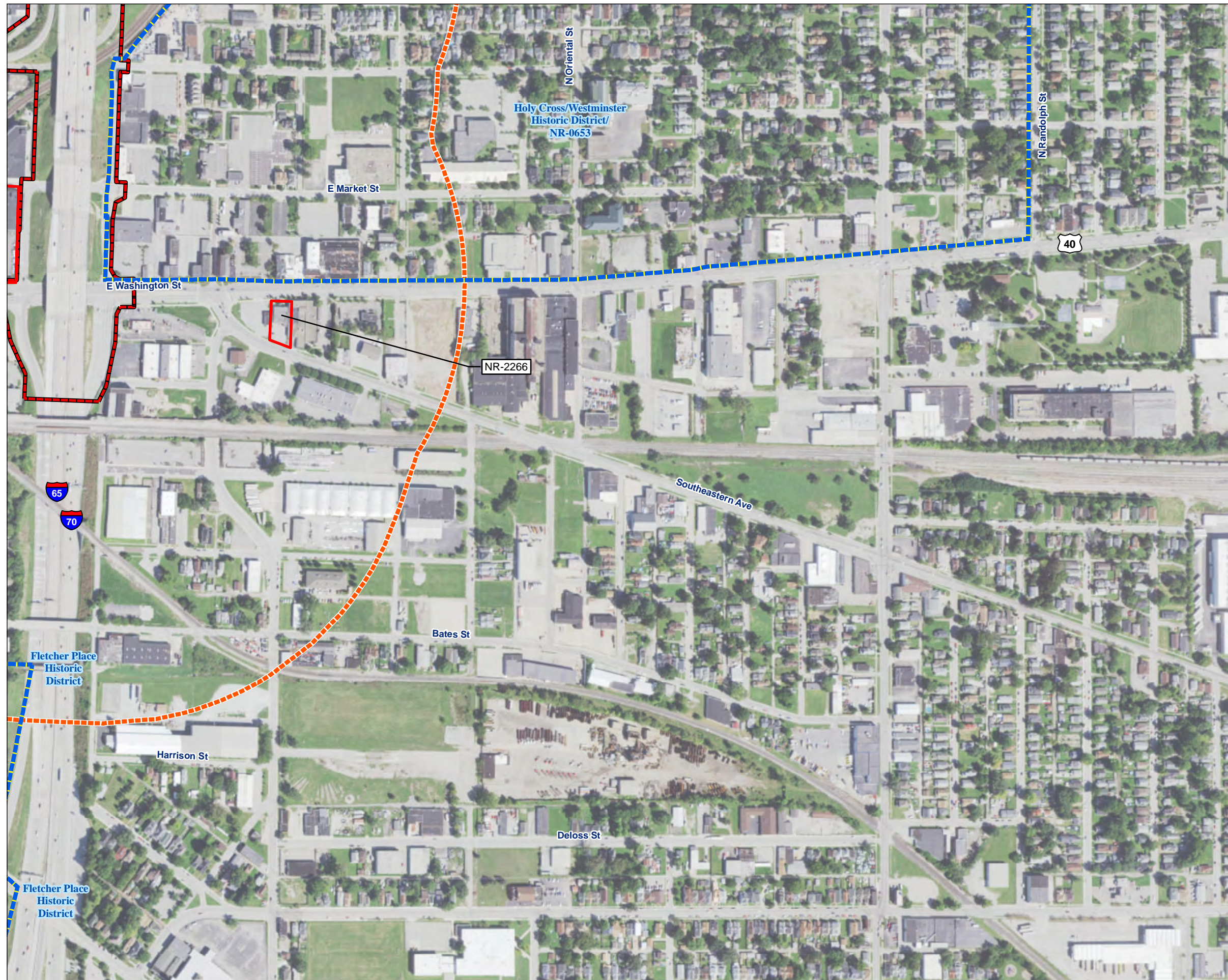


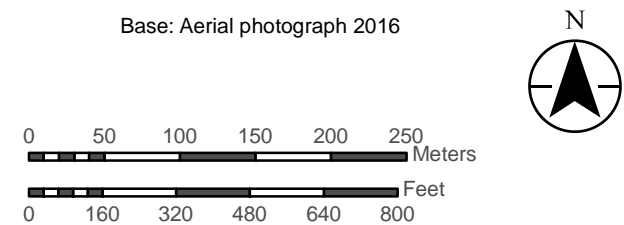
Figure 4 Sheet 5 of 10

Aerial photograph showing the records check results, including NHLs, individually listed NRHP resources, NRHP-listed historic districts, IRHSS-listed resources, eligible resources, and representative properties recommended not eligible. (10 Sheets)





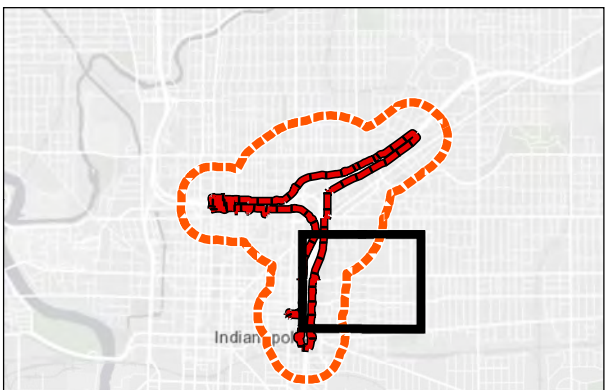
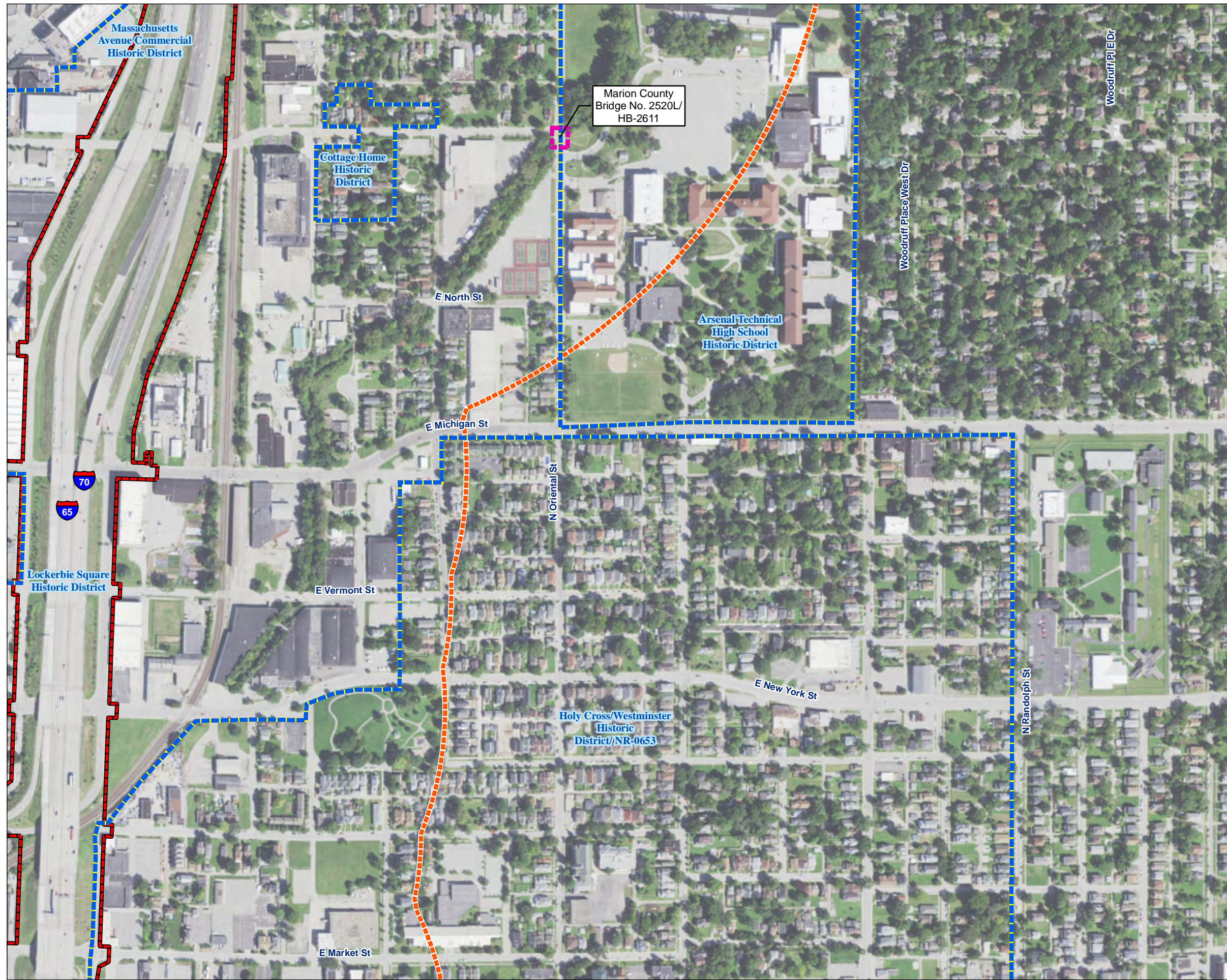
- I-65/I-70 North Split Interchange Reconstruction Project Area
- I-65/I-70 North Split Interchange Reconstruction Project APE
- NRHP/IRHSS listed Historic district
- NRHP listed - Individual property



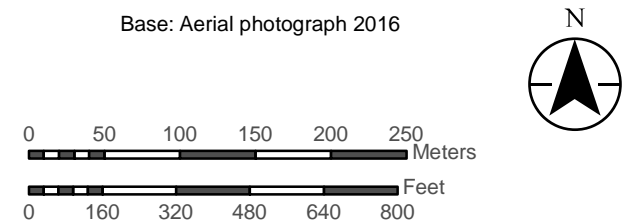
**Figure 4** **Sheet 6 of 10**

Aerial photograph showing the records check results, including NHLs, individually listed NRHP resources, NRHP-listed historic districts, IRHSS-listed resources, eligible resources, and representative properties recommended not eligible. (10 Sheets)





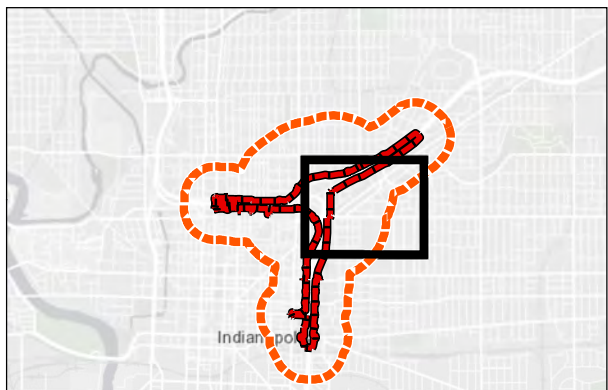
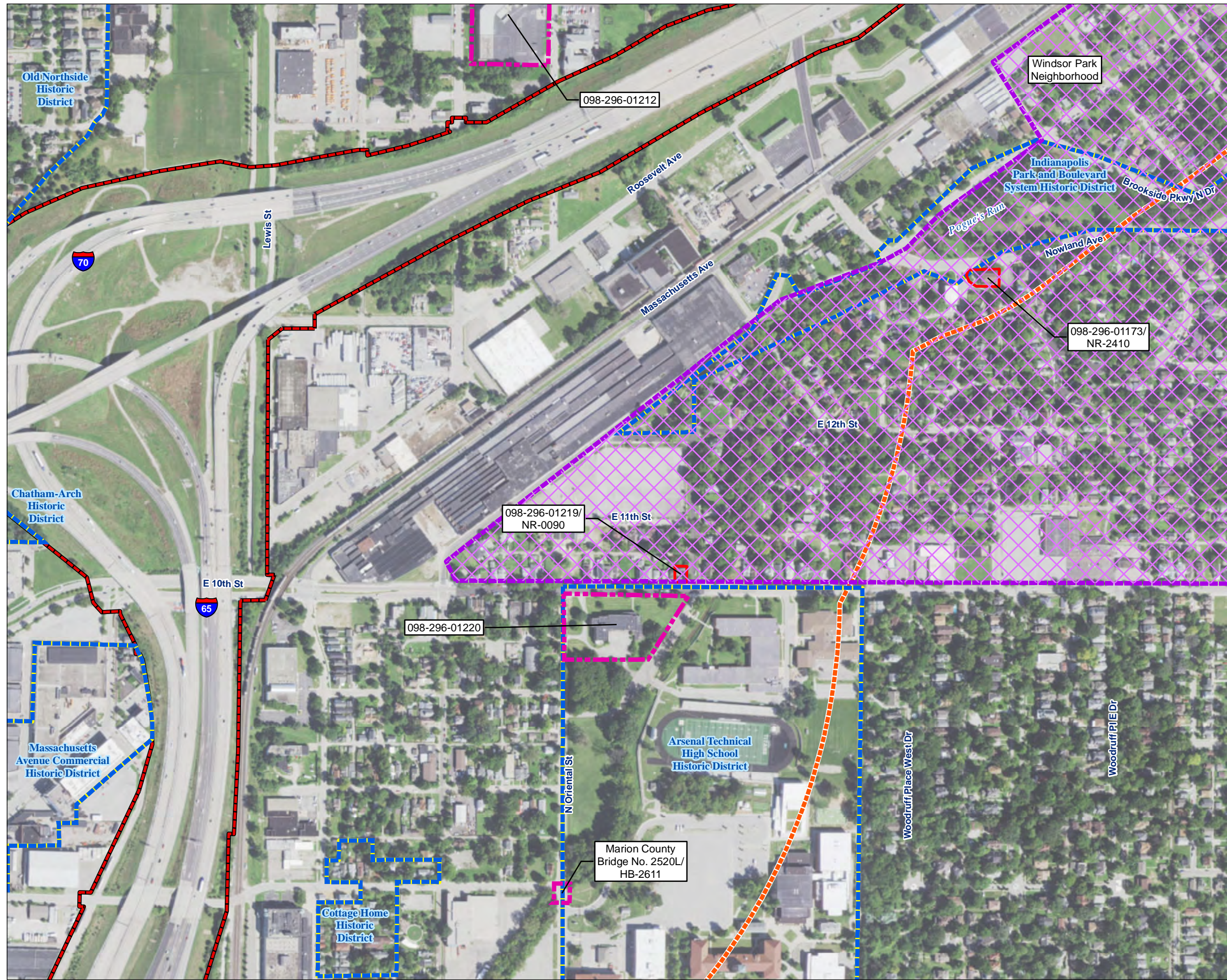
- I-65/I-70 North Split Interchange Reconstruction Project Area
- I-65/I-70 North Split Interchange Reconstruction Project APE
- NRHP/IRHSS listed Historic district
- Recommended NRHP boundary- Individual property



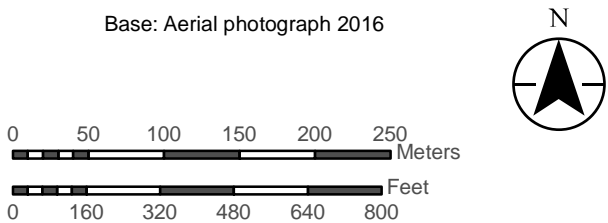
**Figure 4** **Sheet 7 of 10**

Aerial photograph showing the records check results, including NHLs, individually listed NRHP resources, NRHP-listed historic districts, IRHSS-listed resources, eligible resources, and representative properties recommended not eligible. (10 Sheets)





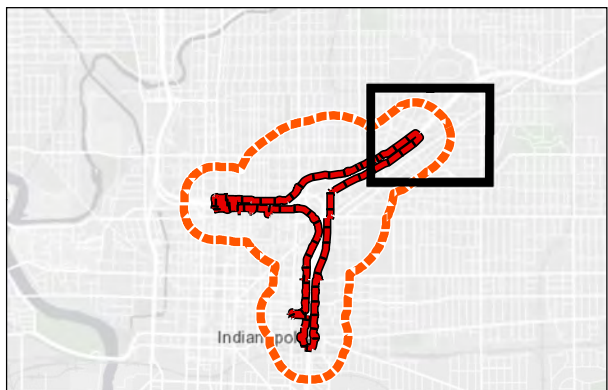
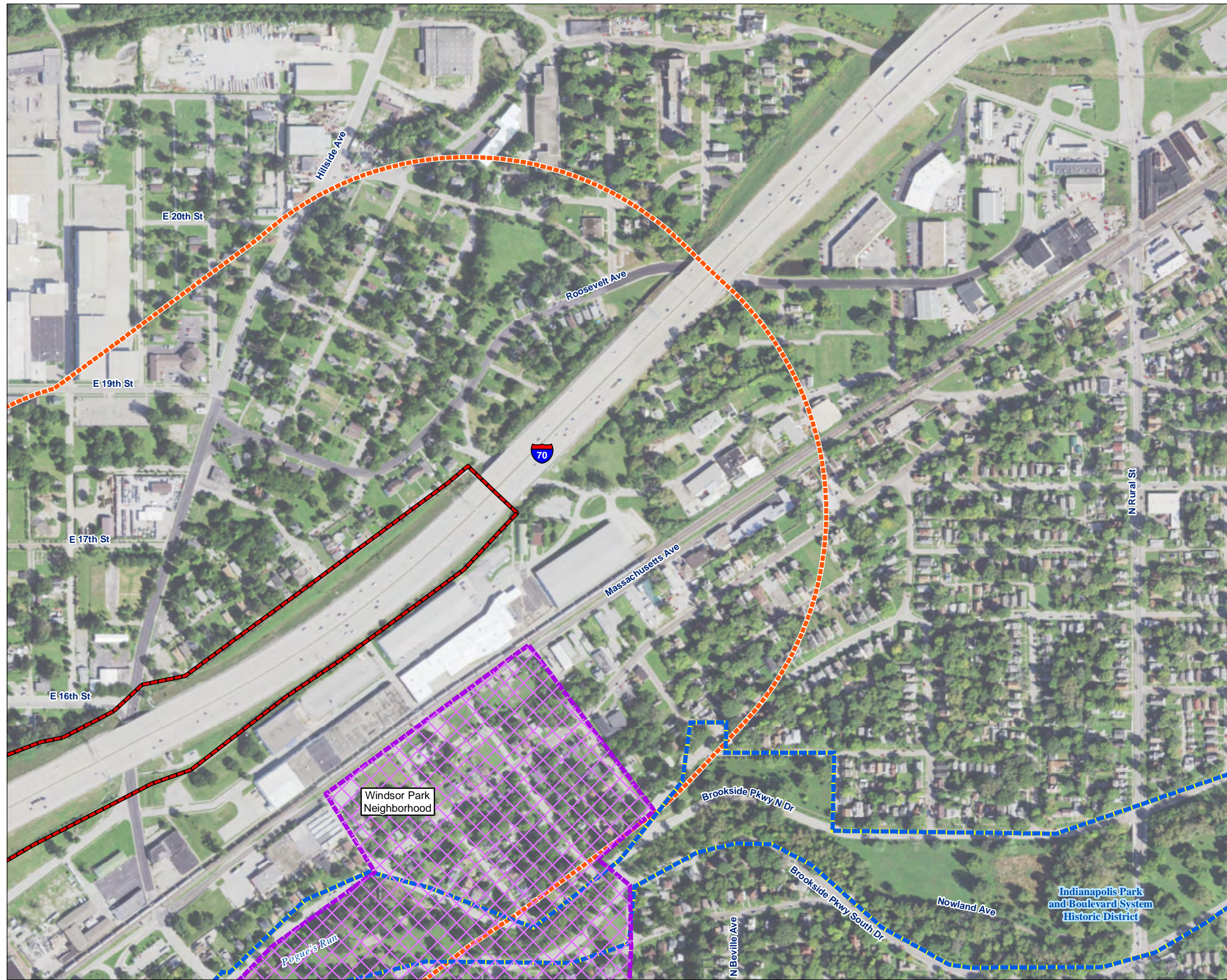
- I-65/I-70 North Split Interchange Reconstruction Project Area
- I-65/I-70 North Split Interchange Reconstruction Project APE
- NRHP/IRHSS listed Historic district
- NRHP listed - Individual property
- Recommended NRHP boundary-Proposed Historic District
- Recommended NRHP boundary- Individual property







**Figure 4** **Sheet 8 of 10**

Aerial photograph showing the records check results, including NHLs, individually listed NRHP resources, NRHP-listed historic districts, IRHSS-listed resources, eligible resources, and representative properties recommended not eligible. (10 Sheets)





-  I-65/I-70 North Split Interchange Reconstruction Project Area
-  I-65/I-70 North Split Interchange Reconstruction Project APE
-  NRHP/IRHSS listed Historic district
-  Recommended NRHP boundary-Proposed Historic District

Base: Aerial photograph 2016

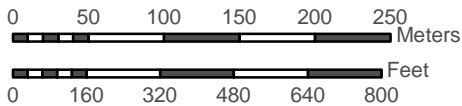
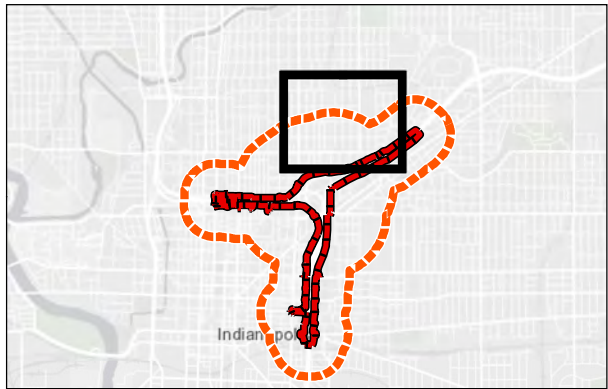
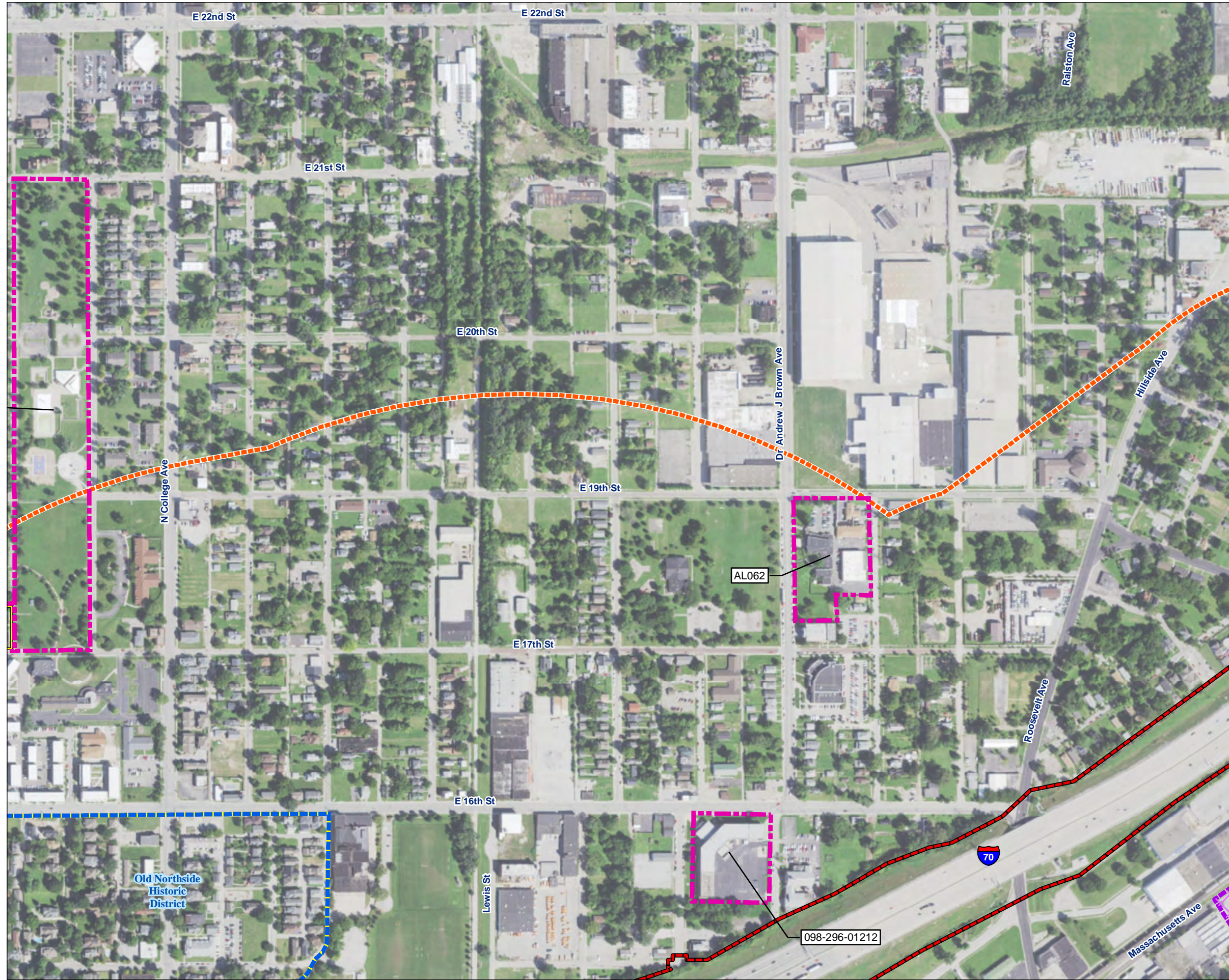


Figure 4

Sheet 9 of 10

Aerial photograph showing the records check results, including NHLs, individually listed NRHP resources, NRHP-listed historic districts, IRHSS-listed resources, eligible resources, and representative properties recommended not eligible. (10 Sheets)





- I-65/I-70 North Split Interchange Reconstruction Project Area
- I-65/I-70 North Split Interchange Reconstruction Project APE
- NRHP/IRHSS listed Historic district
- IRHSS listed (not NRHP listed)
- Recommended NRHP boundary-Proposed Historic District
- Recommended NRHP boundary- Individual property

Base: Aerial photograph 2016

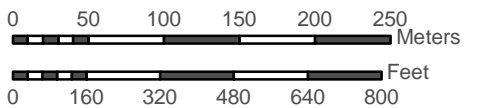


Figure 4

Sheet 10 of 10

Aerial photograph showing the records check results, including NHLs, individually listed NRHP resources, NRHP-listed historic districts, IRHSS-listed resources, eligible resources, and representative properties recommended not eligible. (10 Sheets)